



SAFETY TIPS & WARNINGS

The following recommendations should help to increase the life of the tool and also contribute to personal safety and better performance.

- When using any tool, safety glasses, safety shoes, safety helmet, safety gloves and ear plugs should be worn for full protection.
- Always have a sure footing to give hammer proper support while operating and don't take chances.
- To prevent damage to both tool and accessory, accessory must be held firmly against the work surface before tool is throttled.
- Never use air tools for prying during use. If tool is being used properly, this action is not necessary.
- Never use dull tools as they will accomplish very little and could break from fatigue.
- Proper reconditioning procedures should be followed to prevent premature breakage.
- Hammer parts should always be kept in good repair. Worn bushings and pistons cause excessive shank wear on tools.
- Warm tools prior to use when temperature is below freezing.
- Whip hose assemblies can cause serious injury. Always check for damaged or loose hoses and fittings.
- Always disconnect the air supply before changing chisels or dismantling the tool for service or repair. For maximum safety we advise the installation of a shut-off valve at the end of the air line.

AIR TOOL MAINTENANCE & REPAIR

Champion Chisel Works has an experienced service department for the repair and maintenance of air tools. Please call for complete details. Estimated repair costs will be provided upon request.

TABLE OF CONTENTS

Chipping Hammers	2 - 7
Rivet Busters	8 - 11
Clay Diggers	12 - 13
Pavement Breakers	14 - 19
Rock Drills	20 - 23
Rammers	24 - 29
Scalers	30 - 33
Floor Scrapers	34 - 37
Accessories	38



FREIGHT POLICY

All prices are FOB Shipping Point.

Air Tool Orders:

*Air Tool orders of \$3,500 (net price) or more receive free freight.

*Air Tool orders of \$500 (net price) or more that include an additional \$1,500 (net price) or more in Steel receive free freight.

Steel Orders:

\$100 - \$1,499 Customer Pays Total Freight

\$1,500 - \$1,999 (net price) Customer Pays 1/2 Freight

\$2,000 + (net price) Freight Prepaid

Returns:

Items returned may be subject to a 20% restocking fee. Please call for details.

LIMITED WARRANTY

Champion Chisel Works, Inc. tools are warranted against defects in material and workmanship for 180 days from date of purchase. Warranty applies only to new tools purchased through Champion Chisel Works. It does not cover any tool that may have been abused or misused during operation. It does not cover normal wear and tear or air tools that are repaired or modified by anyone other than a representative of Champion Chisel Works. Air tools must be operated at 90 PSI to receive coverage of this warranty. No other warranty is implied or expressed in this catalog.

If an air tool is found to be defective within 180 days of purchase, please contact Champion Chisel Works to receive an RMA number and instructions for returning the tool to Champion Chisel Works for inspection.

LIGHTWEIGHT CHIPPER

10 LB CLASS



2.375" STROKE

Model AT-CH2H-LW
(.580" Hex Shank)

Model AT-CH2R-LW
(.680" Round Shank)

Blows Per Minute	2550
Stroke	2.375"
Bore	1-1/8"
Shank Diameter	.580"H/.680"R
Length	16"
Weight	10 lbs
Air Inlet Bushing	7/8"
Avg. Air Consumption (90 PSI)	15.8 cfm
Recommended Oil Weight	SAE 10 W 20

*Champion Chisel Works lightweight chipping hammers are sold without retainers. To order a chipping hammer with a retainer and lock spring attached, please add the corresponding suffix shown below to the model number of the gun.

Suffix	Description
-O	Solid oval retainer & lock spring
-QC	Quick change ball type round retainer & lock spring

Examples: AT-CH2R-LW-O is a .680" round shank chipping hammer with an oval retainer & lock spring included. AT-CH2R-LW is a .680" round shank chipping hammer without a retainer or lock spring.

ACCESSORIES



Solid Retainer



Lock Spring

Part No.	Description
10-CHIA-020	Oval Collar Solid Retainer
10-CHIA-021	Quick Change Round Collar Retainer
CHR-SPRING	Lock Spring
HS-78412	7/8"-24 UNC x 1/2" Hose Barb
WHA-6CH	6' whip hose assembly with ILO-S in line oiler.



Whip Hose Assembly



Air Inlet Hose Swivel

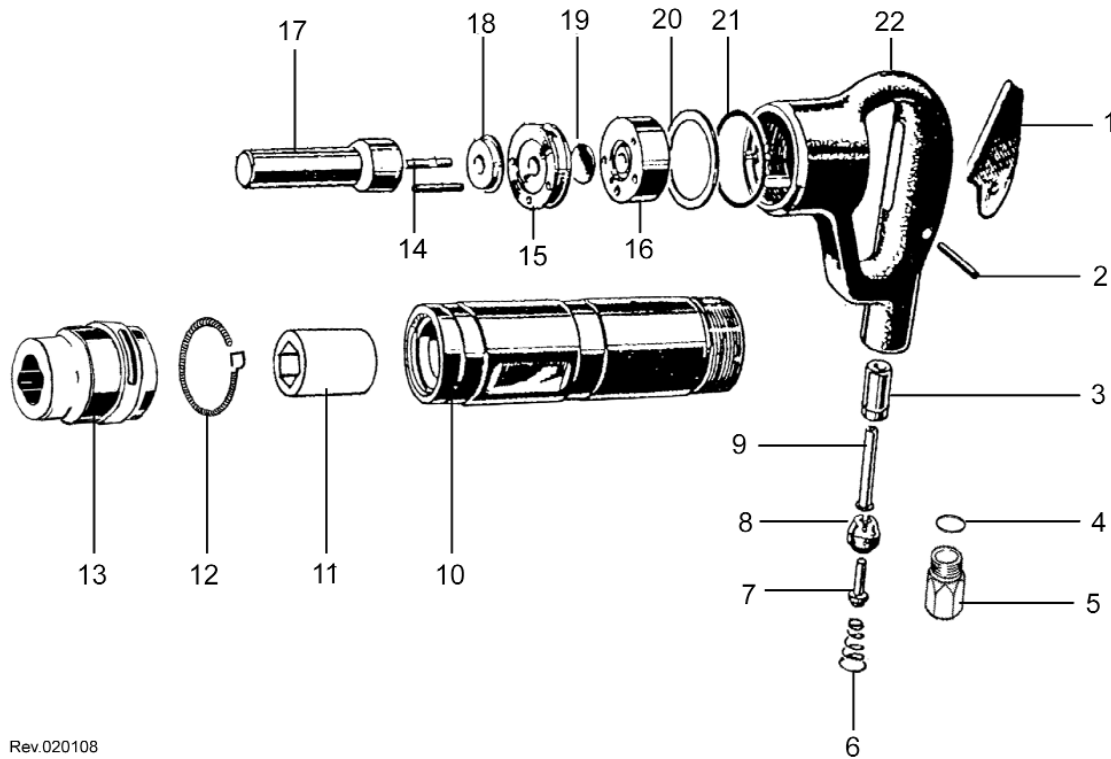
Additional accessories available - see page 38.

LIGHTWEIGHT CHIPPER

10 LB CLASS

Parts List

WHEN ORDERING REPLACEMENT PARTS, FURNISH THE MODEL & SERIAL NUMBER OF YOUR TOOL



Rev.020108

INDEX	PART NO.	DESCRIPTION
1	10-CHIN-001	LEVER/TRIGGER
2	250027-481	LEVER/TRIGGER PIN
3	10-CHIA-001	PUSH ROD BUSHING
4	10-CHIA-002	INLET BUSHING O-RING
5	10-CHIA-003	INLET BUSHING 7/8" X 24
6	10-CHIA-004	THROTTLE VALVE SPRING
7	10-CHIA-005	THROTTLE VALVE
8	10-CHIA-006	THROTTLE VALVE BUSHING
9	10-CHIA-007	PUSH ROD
10	10-CHIA-008	CYLINDER BARE
11	10-CHIA-009	CHISEL BUSHING - .580" HEX
*	10-CHIA-010	CHISEL BUSHING - .680" ROUND

INDEX	PART NO.	DESCRIPTION
12	CHR-SPRING	LOCK SPRING
13	10-CHIA-020	OVAL COLLAR RETAINER
14	10-CHIA-011	DOWEL PIN (2)
15	10-CHIA-012	VALVE PLATE LOWER
16	10-CHIA-013	VALVE PLATE UPPER
17	10-CHIA-014	PISTON
18	10-CHIA-015	PLASTIC VALVE BUMPER
19	10-CHIA-016	VALVE DISC
20	10-CHIA-017	PACKING (2)
21	10-CHIO-001	CYLINDER O-RING
22	10-CHIA-018	HANDLE BARE (INCL. 10-CHIA-001)
*	10-CHIA-019	HANDLE COMPLETE

*NOT SHOWN IN PARTS DIAGRAM

CHIPPING HAMMERS

12 - 15 LB CLASS

4- BOLT CLOSED HANDLE



2" STROKE

Model AT-CH2H

(.580" Hex Shank)

Model AT-CH2R

(.680" Round Shank)

Blows Per Minute	2300
Stroke	2"
Bore	1-1/8"
Shank Diameter	.580"H/.680"R
Length	14"
Weight(Steel)	16 lbs
Air Inlet Bushing	7/8"
Avg. Air Consumption (90 PSI)	30.5 cfm
Recommended Oil Weight	SAE 10 W 20

3" STROKE

Model AT-CH3H

(.580" Hex Shank)

Model AT-CH3R

(.680" Round Shank)

Blows Per Minute	2200
Stroke	3"
Bore	1-1/8"
Shank Diameter	.580"H/.680"R
Length	15.25"
Weight	17 lbs
Air Inlet Bushing	7/8"
Avg. Air Consumption (90 PSI)	32 cfm
Recommended Oil Weight	SAE 10 W 20

4" STROKE

Model AT-CH4H

(.580" Hex Shank)

Model AT-CH4R

(.680" Round Shank)

Blows Per Minute	1800
Stroke	4"
Bore	1-1/8"
Shank Diameter	.580"H/.680"R
Length	17"
Weight	18 lbs
Air Inlet Bushing	7/8"
Avg. Air Consumption (90 PSI)	35 cfm
Recommended Oil Weight	SAE 10 W 20

*Champion Chisel Works 4-Bolt closed handle chipping hammers are sold without retainers. To order a chipping hammer with a retainer and lock spring attached, please add the corresponding suffix shown below to the model number of the gun.

Suffix	Description
-O	Oval retainer & lock spring
-R	Round retainer & lock spring
-QC	Quick change ball type round retainer & lock spring

Examples: AT-CH4R-R is a .680" round shank, 4" stroke gun with a round retainer & lock spring included. AT-CH4R is a .680" round shank, 4" stroke gun without a retainer or lock spring.

ACCESSORIES



Solid Retainer



Quick Change Retainer



Lock Spring



Air Inlet Hose Swivel



Whip Hose Assembly

Part No.	Description
CHR-1190SUL	Solid/Taper/Oval
CHR-1291SUL	Quick Change/Taper
CHR-SPRING	Lock Spring
CHR-QCKIT	Quick Change Retainer Repair Kit (1 Spring, 1 Lock Ring, 6 Ball Bearings)
HS-782412	7/8"-24 UNC x 1/2" Hose Barb
WHA-6CH	6' whip hose assembly with HS-782412 swivel, coupling and ILO-S in line oiler.

Additional accessories available - see page 38.

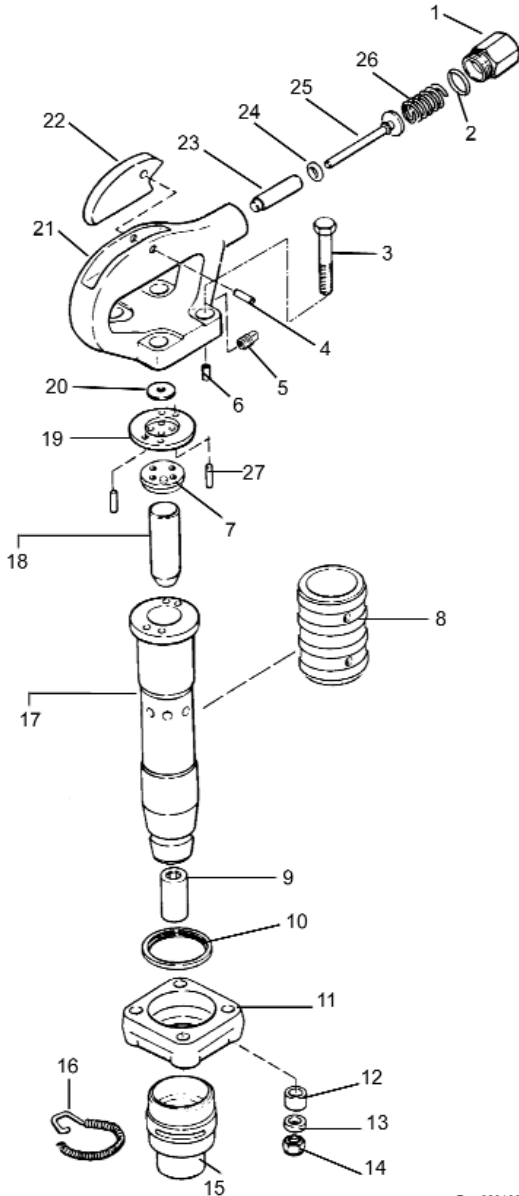
CHIPPING HAMMERS

12 - 15 LB CLASS

4- BOLT CLOSED HANDLE

Parts List

WHEN ORDERING REPLACEMENT PARTS, FURNISH THE MODEL & SERIAL NUMBER OF YOUR TOOL



INDEX	PART NO.	DESCRIPTION
1	10-CHIH-001	7/8" - 24 INLET BUSHING
2	250027-490	O-RING
3	250027-485	BOLT
*	10-CHIH-002	BOLT WASHER
4	ATP0481	ROLL PIN
5	10-CHIH-003	LARGE - HANDLE AIR PLUG
6	10-CHIH-004	SMALL - HANDLE AIR PLUG
7	250027-480	VALVE SEAT BUMPER
8	250027-499	EXHAUST DEFLECTOR - RUBBER
9	B01-19B	ROUND BUSHING
*	B01-17B	HEX BUSHING
10	250027-493	ABSORBER RING
11	250027-494	BARREL FLANGE
12	250027-495	VIBRATION SPACER
13	250027-496	HANDLE BOLT SPACER
14	250027-497	HANDLE BOLT NUT
15	CHR-1190SUL	OVAL COLLAR RETAINER
*	CHR-1190RSUL	ROUND COLLAR RETAINER
16	CHR-SPRING	RETAINER LOCK SPRING
17	10-CHIB-001	2" BARREL
*	10-CHIC-001	3" BARREL
*	10-CHID-001	4" BARREL
18	CHP-2	2" PISTON
*	CHP-3	3" PISTON
*	CHP-4	4" PISTON
19	250027-482	VALVE SEAT
20	250027-483	DISC VALVE
21	250027-484	BARE HANDLE (INCL. 250027-487)
*	10-CHIH-005	HANDLE COMPLETE
22	10-CHIN-001	TRIGGER
23	250027-487	VALVE STEM BUSHING
24	250027-431	O-RING
25	250027-488	THROTTLE VALVE
26	250027-489	THROTTLE VALVE SPRING
27	250027-481	SOLID VALVE LOCATOR PIN

*NOT SHOWN IN PARTS DIAGRAM

Rev 020108

CHIPPING HAMMERS

12 - 15 LB CLASS

OPEN HANDLE



2" STROKE

Model AT-CH2H-OH
(.580" Hex Shank)

Model AT-CH2R-OH
(.680" Round Shank)

Blows Per Minute	2300
Stroke	2"
Bore	1-1/8"
Shank Diameter	.580H/.680R
Length	14"
Weight	12 lbs
Air Inlet Bushing	3/8"
Avg. Air Consumption (90 PSI)	29.75 cfm
Recommended Oil Weight	SAE 10 W 20

3" STROKE

Model AT-CH3H-OH
(.580" Hex Shank)

Model AT-CH3R-OH
(.680" Round Shank)

Blows Per Minute	2200
Stroke	3"
Bore	1-1/8"
Shank Diameter	.580H/.680R
Length	15.25"
Weight	13 lbs
Air Inlet Bushing	3/8"
Avg. Air Consumption (90 PSI)	31.5 cfm
Recommended Oil Weight	SAE 10 W 20

4" STROKE

Model AT-CH4H-OH
(.580" Hex Shank)

Model AT-CH4R-OH
(.680" Round Shank)

Blows Per Minute	1800
Stroke	4"
Bore	1-1/8"
Shank Diameter	.580"H/.680"R
Length	17"
Weight	14 lbs
Air Inlet Bushing	3/8"
Avg. Air Consumption (90 PSI)	33.23 cfm
Recommended Oil Weight	SAE 10 W 20

*Champion Chisel Works open handle chipping hammers are sold without retainers. To order a chipping hammer with a retainer and lock spring attached, please add the corresponding suffix shown below to the model number of the gun.

Suffix	Description
-O	Oval retainer & lock spring
-R	Round retainer & lock spring
-QC	Quick change ball type round retainer & lock spring

Examples: AT-CH4R-OH-R is a .680" round shank, 4" stroke gun with a round retainer & lock spring included. AT-CH4R-OH is a .680" round shank, 4" stroke gun without a retainer or lock spring.

ACCESSORIES



Solid Retainer



Quick Change Retainer



Lock Spring



Air Inlet Hose Swivel

Part No.	Description
CHR-1190SUL	Solid/Taper/Oval
CHR-1291SUL	Quick Change/Taper
CHR-SPRING	Lock Spring
CHR-QCKIT	Quick Change Retainer Repair Kit (1 Spring, 1 Lock Ring, 6 Ball Bearings)
HS-782412	7/8"-24 UNC x 1/2" Hose Barb
HS-3812	3/8" NPT x 1/2" Hose Barb
WHA-6CH	6' whip hose assembly with HS-782412 swivel, coupling and ILO-S in line oiler.



Whip Hose Assembly

Additional accessories available - see page 38.

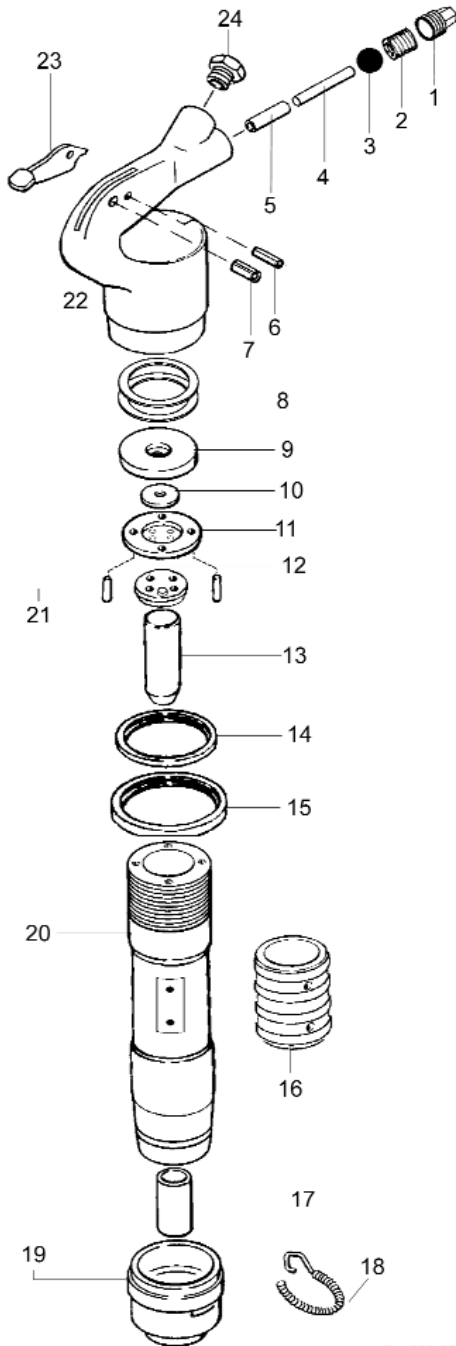
CHIPPING HAMMERS

12 - 15 LB CLASS

OPEN HANDLE

Parts List

WHEN ORDERING REPLACEMENT PARTS, FURNISH THE MODEL & SERIAL NUMBER OF YOUR TOOL



INDEX	PART NO.	DESCRIPTION
1	10-CHIJ-001	THROTTLE VALVE PLUG
2	10-CHIM-002	THROTTLE VALVE SPRING
3	10-CHIM-001	THROTTLE VALVE BALL
4	10-CHIJ-002	PUSH PIN
5	10-CHIJ-003	PUSH PIN BUSHING
6	10-CHIJ-004	LEVER STOP PIN
7	10-CHIJ-005	LEVER FULCRUM PIN
8	10-CHIJ-006	INTER LOCK RINGS
9	10-CHIJ-007	UPPER VALVE PLATE
10	10-CHIJ-008	VALVE DISC
11	10-CHIJ-009	FRONT VALVE SPACER/HOUSING
12	250027-480	VALVE BUMPER SEAT
13	CHP-2	2" PISTON
*	CHP-3	3" PISTON
*	CHP-4	4" PISTON
14	250027-493	LOCK RING BUMPER
15	10-CHIJ-010	HANDLE LOCK RING
16	250027-499	RUBBER EXHAUST DEFLECTOR
17	B01-19B	BUSHING FOR ROUND SHANK
*	B01-17B	BUSHING FOR HEX SHANK
18	CHR-SPRING	RETAINER SPRING
19	CHR-1190SUL	OVAL COLLAR RETAINER
*	CHR-1190RSUL	ROUND COLLAR RETAINER
*	10-CHIJ-015	ROUND RETAINER BUMPER
20	10-CHIE-001	2" BARREL
*	10-CHIF-001	3" BARREL
*	10-CHIG-001	4" BARREL
21	10-CHIL-001	VALVE DOWEL (2)
22	10-CHIJ-011	HANDLE BARE (INCL. 10-CHIJ-003)
*	10-CHIJ-012	HANDLE COMPLETE
23	10-CHIJ-013	THROTTLE LEVER
24	10-CHIJ-014	HANDLE BUSHING

*NOT SHOWN IN PARTS DIAGRAM

SERVICE NOTE: When re-assembling this tool following any cleaning or service procedure, the two inter lock rings (10-CHIJ-006) must be replaced inside the handle or the handle will not lock down on the cylinder. A small amount of thread locking agent may also be applied to part 10-CHIJ-010 before tightening this into place.

Rev.020108

RIVET BUSTERS

30 & 40 LB CLASS CLOSED HANDLE



6" STROKE

Model AT-RB06

Blows Per Minute	1200
Stroke	6"
Bore	1-3/16"
Length	20.5"
Weight	26 lbs
Air Inlet Thread	1/2"
Avg. Air Consumption (90 PSI)	44 cfm
Recommended Oil Weight	SAE 10 W 20

8" STROKE

Model AT-RB08

Blows Per Minute	1140
Stroke	8"
Bore	1-3/16"
Length	22.5"
Weight	30 lbs
Air Inlet Thread	1/2"
Avg. Air Consumption (90 PSI)	44 cfm
Recommended Oil Weight	SAE 10 W 20

11" STROKE

Model AT-RB11

Blows Per Minute	850
Stroke	11"
Bore	1-3/16"
Length	25.5"
Weight	33 lbs
Air Inlet Thread	1/2"
Avg. Air Consumption (90 PSI)	50 cfm
Recommended Oil Weight	SAE 10 W 20



Part No.	Description
RBP-RB2104	Rubber Bumper
RBP-UB2102	Urethane Bumper
RBP-US2101	Upper Sleeve
RBP-LS2103	Lower Sleeve
RBP-LS2103S	Split Lower Sleeve
RBP-RS2194	Retainer Spring
RBR-1851	Retainer
HS-1212	1/2"NPT x1/2" Hose Barb



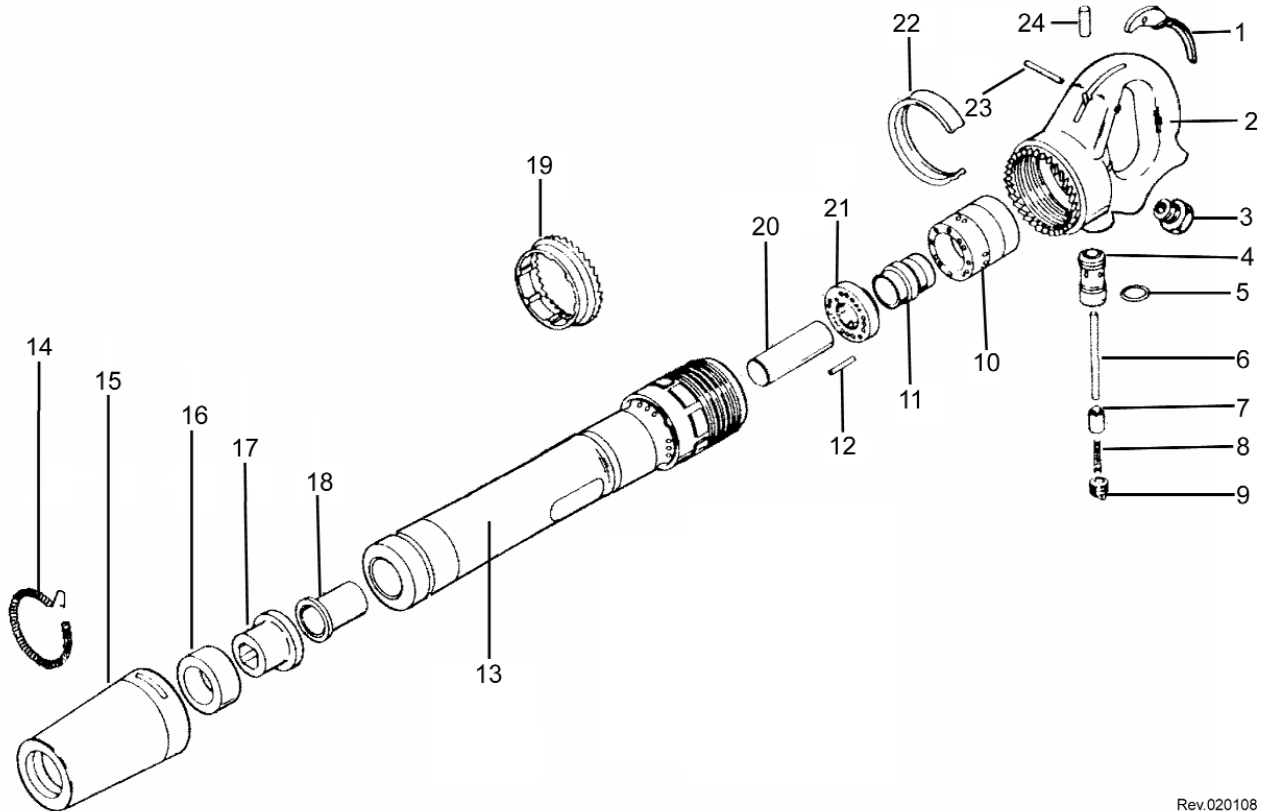
Additional accessories available - see page 38.

RIVET BUSTERS

30 & 40 LB CLASS CLOSED HANDLE

Parts List

WHEN ORDERING REPLACEMENT PARTS, FURNISH THE MODEL & SERIAL NUMBER OF YOUR TOOL



Rev.020108

INDEX	PART NO.	DESCRIPTION
1	10-RBIG-001	THROTTLE LEVER
2	10-RBIG-002	HANDLE BARE (INCL. 10-RBIG-008)
*	10-RBIG-003	HANDLE COMPLETE
3	10-RBIJ-001	HANDLE BUSHING
4	10-RBIG-004	THROTTLE VALVE BUSHING
*	10-RBIG-005	THROTTLE VALVE BUSHING O-RING
5	10-RBIJ-002	THROTTLE VALVE O-RING
6	10-RBIG-006	PUSH PIN
7	10-RBIG-007	THROTTLE VALVE
8	10-RBIJ-003	THROTTLE VALVE SPRING
9	10-RBIJ-004	THROTTLE VALVE PLUG
10	10-RBIJ-005	VALVE BOX
11	10-RBIJ-006	VALVE
12	10-RBIJ-007	VALVE DOWEL PIN
13	10-RBIK-001	6" BARREL
*	10-RBIL-001	8" BARREL

INDEX	PART NO.	DESCRIPTION
*	10-RBIM-001	11" BARREL
14	RBP-RS2194	RETAINER SPRING
15	RBR-1851	RETAINER
16	RBP-UB2102	RETAINER BUMPER - URETHANE
*	RBP-RB2104	RETAINER BUMPER - RUBBER
17	RBP-LS2103	LOWER SLEEVE BUSHING
18	RBP-US2101	UPPER SLEEVE BUSHING
19	10-RBIJ-008	HANDLE LOCK RING
20	10-RBIN-001	3" PISTON (FOR 6" & 8" STROKE)
*	10-RBIM-002	4" PISTON (FOR 11" STROKE)
21	10-RBIJ-009	VALVE COVER FRONT
*	10-RBIJ-010	VALVE ASSEMBLY
22	10-RBIJ-011	HANDLE LOCK SPRING
23	10-RBIG-008	THROTTLE LEVER PIN
24	10-RBIG-009	PUSH PIN BUSHING

*NOT SHOWN IN PARTS DIAGRAM

NOTE: PART NO. 10-RBIM-002 MAY BE USED IN MODEL AT-RB08 TO PRODUCE MORE ENERGY AT A SLOWER B.P.M.

RIVET BUSTERS

30 & 40 LB CLASS OPEN HANDLE



6" STROKE

Model AT-RB06-OH

Blows Per Minute	1200
Stroke	6"
Bore	1-3/16"
Length	20.5"
Weight	26 lbs
Air Inlet Thread	1/2"
Avg. Air Consumption (90 PSI)	44 cfm
Recommended Oil Weight	SAE 10 W 20

8" STROKE

Model AT-RB08-OH

Blows Per Minute	1140
Stroke	8"
Bore	1-3/16"
Length	22.5"
Weight	30 lbs
Air Inlet Thread	1/2"
Avg. Air Consumption (90 PSI)	44 cfm
Recommended Oil Weight	SAE 10 W 20

11" STROKE

Model AT-RB11-OH

Blows Per Minute	850
Stroke	11"
Bore	1-3/16"
Length	25.5"
Weight	33 lbs
Air Inlet Thread	1/2"
Avg. Air Consumption (90 PSI)	50 cfm
Recommended Oil Weight	SAE 10 W 20



Part No.	Description
RBP-RB2104	Rubber Bumper
RBP-UB2102	Urethane Bumper
RBP-US2101	Upper Sleeve
RBP-LS2103	Lower Sleeve
RBP-LS2103S	Split Lower Sleeve
RBP-RS2194	Retainer Spring
RBR-1851	Retainer
HS-1212	1/2"NPT x1/2" Hose Barb



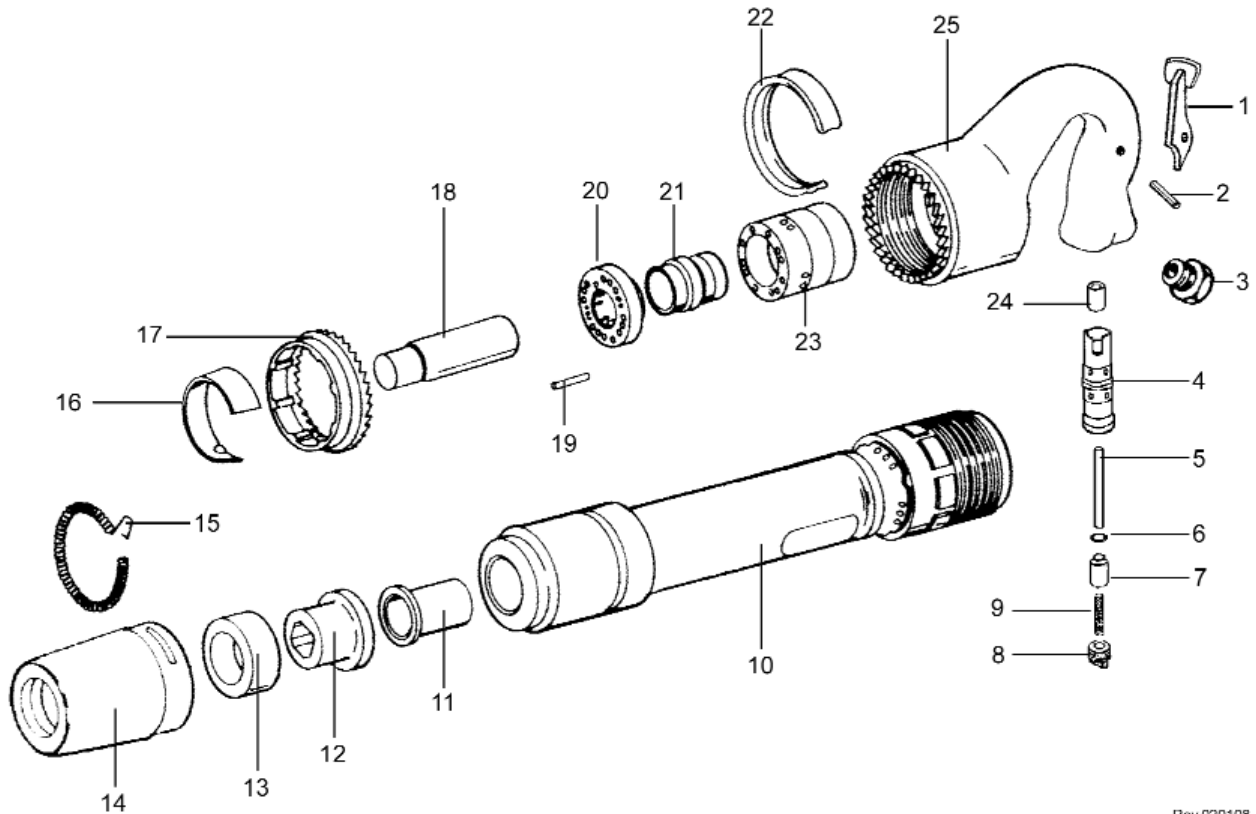
Additional accessories available - see page 38.

RIVET BUSTERS

30 & 40 LB CLASS OPEN HANDLE

Parts List

WHEN ORDERING REPLACEMENT PARTS, FURNISH THE MODEL & SERIAL NUMBER OF YOUR TOOL



Rev.020108

INDEX	PART NO.	DESCRIPTION
1	10-RB1H-001	THROTTLE LEVER
2	10-RB1H-002	THROTTLE LEVER PIN
3	10-RB1J-001	HANDLE BUSHING
4	10-RB1H-003	THROTTLE VALVE BUSHING
5	10-RB1H-004	PUSH PIN
6	10-RB1J-002	THROTTLE VALVE O-RING
7	10-RB1H-005	THROTTLE VALVE
8	10-RB1J-004	THROTTLE VALVE PLUG
9	10-RB1J-003	THROTTLE VALVE SPRING
10	10-RB1K-001	6" BARREL
*	10-RB1L-001	6" & 8" BARREL
*	10-RB1M-001	11" BARREL
11	RBP-US2101	UPPER SLEEVE BUSHING
12	RBP-LS2103	LOWER SLEEVE BUSHING
13	RBP-UB2102	RETAINER BUMPER - URETHANE
*	RBP-RB2104	RETAINER BUMPER - RUBBER

INDEX	PART NO.	DESCRIPTION
14	RBR-1851	RETAINER
15	RBP-RS2194	RETAINER SPRING
16	10-RB1H-006	EXHAUST DEFLECTOR
17	10-RB1J-008	HANDLE LOCK RING
18	10-RB1N-001	3" PISTON
*	10-RB1M-002	4" PISTON
19	10-RB1J-007	VALVE DOWEL PIN
20	10-RB1J-009	VALVE COVER FRONT
*	10-RB1J-010	VALVE ASSEMBLY
21	10-RB1J-006	VALVE
22	10-RB1J-011	HANDLE LOCK SPRING
23	10-RB1J-005	VALVE BOX
24	10-RB1H-007	PUSH PIN BUSHING
25	10-RB1H-008	HANDLE BARE (INCL 10-RB1H-007 & 10-RB1H-003)
*	10-RB1H-009	HANDLE COMPLETE

*NOT SHOWN IN PARTS DIAGRAM

NOTE: PART NO. 10-RB1M-002 MAY BE USED IN MODEL AT-RB08-OH TO PRODUCE MORE ENERGY AT A SLOWER B.P.M.

CLAY DIGGERS

30 LB CLASS



THOR STYLE

7/8" x 3-1/4"

Model AT-CD30-78

Blows Per Minute	1550
Stroke	3.375"
Bore	1-3/4"
Length	23"
Weight	30 lbs
Air Inlet Thread	3/8"
Avg. Air Consumption (90 PSI)	49 cfm
Recommended Oil Weight	SAE 15 W 50

1" x 4-1/4"

Model AT-CD30-I

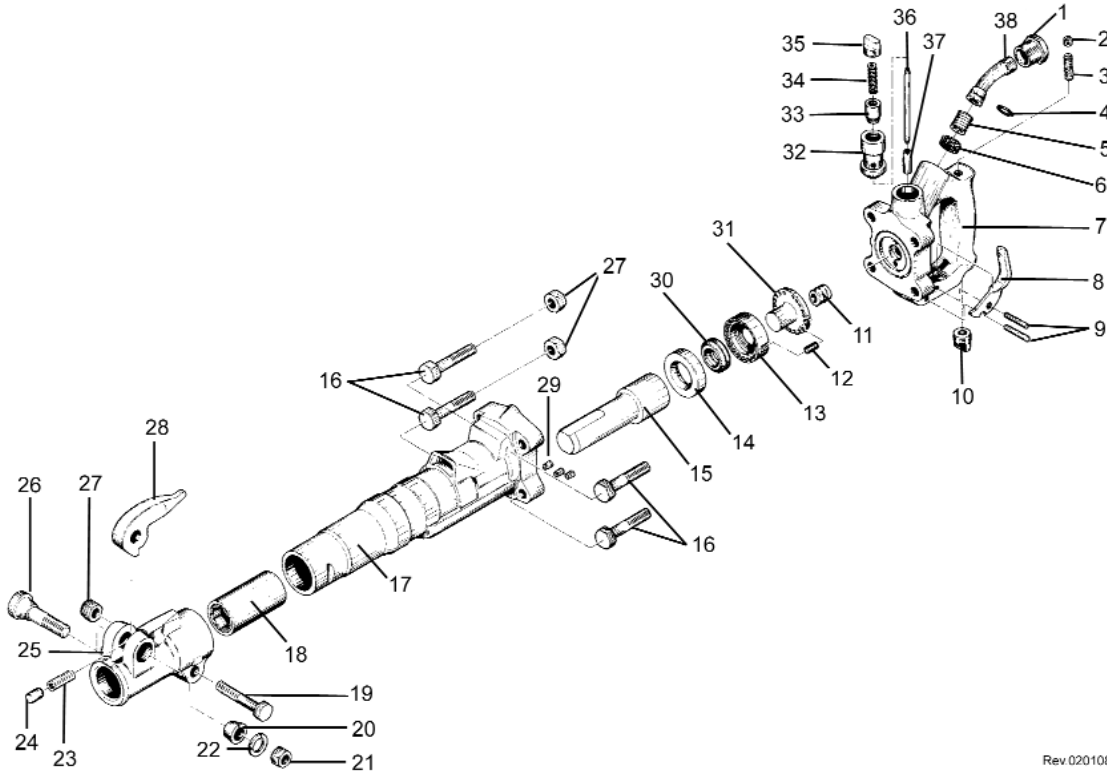
Blows Per Minute	1550
Stroke	3.375"
Bore	1-3/4"
Length	23"
Weight	30 lbs
Air Inlet Thread	3/8"
Avg. Air Consumption (90 PSI)	49 cfm
Recommended Oil Weight	SAE 15 W 50

CLAY DIGGERS

30 LB CLASS

Parts List

WHEN ORDERING REPLACEMENT PARTS, FURNISH THE MODEL & SERIAL NUMBER OF YOUR TOOL



Rev 020108

INDEX	PART NO.	DESCRIPTION
1	10-PBIG-001	AIR INLET SWIVEL NUT
2	10-PBIE-001	OIL CONTROL PLUG
3	10-PBIE-002	OIL CONTROL FELT
4	10-PBIG-002	INLET SWIVEL O-RING
5	10-PBIG-003	INLET SWIVEL SPRING
6	10-PBIG-004	AIR INLET SCREEN
7	10-PBIA-001	BACKHEAD (INCL. 10-PBIA-010 & 10-PBIA-005)
*	10-PBIA-002	BACKHEAD COMPLETE
8	10-PBIA-003	THROTTLE LEVER
9	10-PBIA-004	THROTTLE LEVER PIN
10	10-PBIG-005	OIL PLUG
11	10-PBIG-006	BACKHEAD SPRING
12	10-PBIG-007	VALVE DOWEL
13	10-PBIG-008	VALVE CHEST
14	10-PBIG-009	VALVE SEAT
15	10-PBIG-010	PISTON
16	10-PBIG-011	BACKHEAD BOLT (4)
17	10-PBIG-012	CYLINDER
18	10-PBIA-001	CHUCK BUSHING 7/8" X 3-1/4"
*	10-PBIL-001	CHUCK BUSHING 1" X 4-1/4"
19	10-PBIG-013	FRONTHEAD BOLT
20	10-PBIG-014	RETAINER BOLT BUSHING

INDEX	PART NO.	DESCRIPTION
21	10-PBIG-015	RETAINER BOLT NUT
22	10-PBIG-016	RETAINER BOLT LOCK WASHER
23	10-PBIG-017	PLUNGER SPRING
24	10-PBIG-018	RETAINER PLUNGER
25	10-PBIG-019	FRONTHEAD BARE
*	10-PBIG-020	FRONTHEAD COMPLETE
26	10-PBIG-21	RETAINER BOLT
27	10-PBIG-022	BOLT NUT (5)
*	10-PBIG-023	BOLT WASHER (5)
28	10-PBIG-024	STEEL RETAINER
29	10-PBIG-025	CYLINDER PLUGS (3)
30	10-PBIG-026	AUTOMATIC VALVE
31	10-PBIG-027	VALVE GUIDE
32	10-PBIA-005	THROTTLE VALVE BUSHING
33	10-PBIA-006	THROTTLE VALVE
34	10-PBIA-007	THROTTLE VALVE SPRING
35	10-PBIA-008	THROTTLE VALVE CAP
36	10-PBIA-009	THROTTLE VALVE PUSH PIN
37	10-PBIA-010	PUSH PIN BUSHING
38	10-PBIG-028	AIR INLET SWIVEL
*	10-PBIG-029	MUFFLER ASSEMBLY COMPLETE

*NOT SHOWN IN PARTS DIAGRAM

PAVEMENT BREAKERS

30 LB CLASS



THOR STYLE

7/8" x 3-1/4"

Model AT-PB30-78

Blows Per Minute	1550
Stroke	3.375"
Bore	1-3/4"
Length	22.5"
Weight	34 lbs
Air Inlet Thread	3/8"
Avg. Air Consumption (90 PSI)	49 cfm
Recommended Oil Weight	SAE 15 W 50

1" x 4-1/4"

Model AT-PB30-I

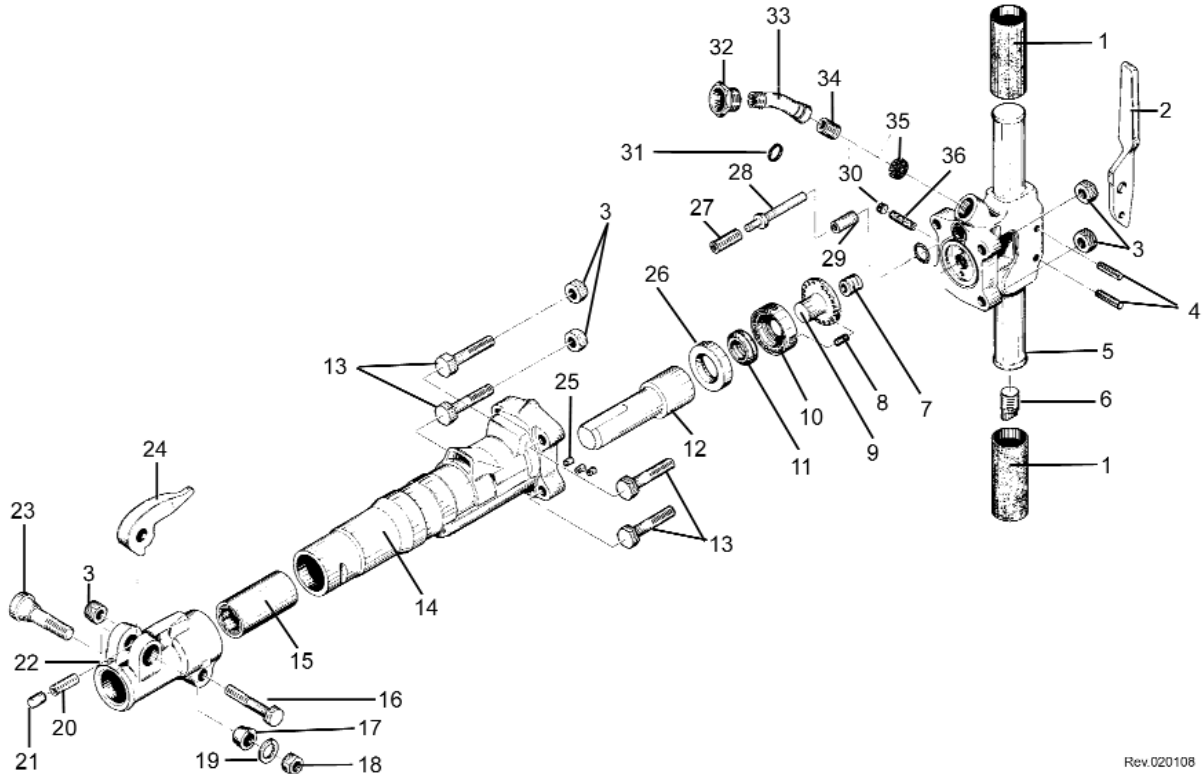
Blows Per Minute	1550
Stroke	3.375"
Bore	1-3/4"
Length	22.5"
Weight	34 lbs
Air Inlet Thread	3/8"
Avg. Air Consumption (90 PSI)	49 cfm
Recommended Oil Weight	SAE 15 W 50

PAVEMENT BREAKERS

30 LB CLASS

Parts List

WHEN ORDERING REPLACEMENT PARTS, FURNISH THE MODEL & SERIAL NUMBER OF YOUR TOOL



Rev.020108

INDEX	PART NO.	DESCRIPTION
1	10-PBIF-001	RUBBER GRIP (2)
2	10-PBIF-002	THROTTLE LEVER
3	10-PBIG-022	BOLT NUT (5)
*	10-PBIG-023	BOLT WASHER (5)
4	10-PBIF-003	THROTTLE LEVER PIN (2)
5	10-PBIB-001	BACKHEAD (INCL. 10-PBIF-005)
*	10-PBIB-002	BACKHEAD COMPLETE
6	10-PBIG-005	OIL PLUG
7	10-PBIG-006	BACKHEAD SPRING
8	10-PBIG-007	VALVE DOWEL
9	10-PBIG-027	VALVE GUIDE
10	10-PBIG-008	VALVE CHEST
11	10-PBIG-026	AUTOMATIC VALVE
12	10-PBIG-010	PISTON
13	10-PBIG-011	BACKHEAD BOLT (4)
14	10-PBIG-012	CYLINDER
15	10-PBIL-001	CHUCK BUSHING 1" X 4-1/4" HEX
*	10-PBIK-001	CHUCK BUSHING 7/8" X 3-1/4" HEX
16	10-PBIG-013	FRONTHEAD BOLT
17	10-PBIG-014	RETAINER BOLT BUSHING
18	10-PBIG-015	RETAINER BOLT NUT

INDEX	PART NO.	DESCRIPTION
19	10-PBIG-016	RETAINER BOLT LOCK WASHER
20	10-PBIG-017	RETAINER PLUNGER SPRING
21	10-PBIG-018	RETAINER PLUNGER
22	10-PBIG-019	FRONTHEAD
*	10-PBIG-020	FRONTHEAD COMPLETE
23	10-PBIG-021	RETAINER BOLT
24	10-PBIG-024	STEEL RETAINER - FORGED
25	10-PBIG-025	CYLINDER PLUG (3)
26	10-PBIG-009	VALVE SEAT
27	10-PBIB-003	THROTTLE VALVE SPRING
28	10-PBIF-004	THROTTLE VALVE
29	10-PBIF-005	THROTTLE VALVE SLEEVE
30	10-PBIE-001	OIL CONTROL PLUG
31	10-PBIG-002	INLET SWIVEL O-RING
32	10-PBIG-001	AIR INLET SWIVEL NUT
33	10-PBIG-028	AIR INLET SWIVEL
34	10-PBIG-003	INLET SWIVEL SPRING
35	10-PBIG-004	AIR INLET SCREEN
36	10-PBIE-002	OIL CONTROL FELT
*	10-PBIG-029	MUFFLER
*	10-PBIJ-001	PLUG

*NOT SHOWN IN PARTS DIAGRAM

PAVEMENT BREAKERS

60 LB CLASS



THOR STYLE

1-1/8" x 6"

Model AT-PB60-118

Blows Per Minute	1400
Stroke	4.0937"
Bore	2-1/4"
Length	25.625"
Weight	67 lbs
Air Inlet Thread	3/4"
Avg. Air Consumption (90 PSI)	59 cfm
Recommended Oil Weight	SAE 15 W 50

1-1/4" x 6"

Model AT-PB60-114

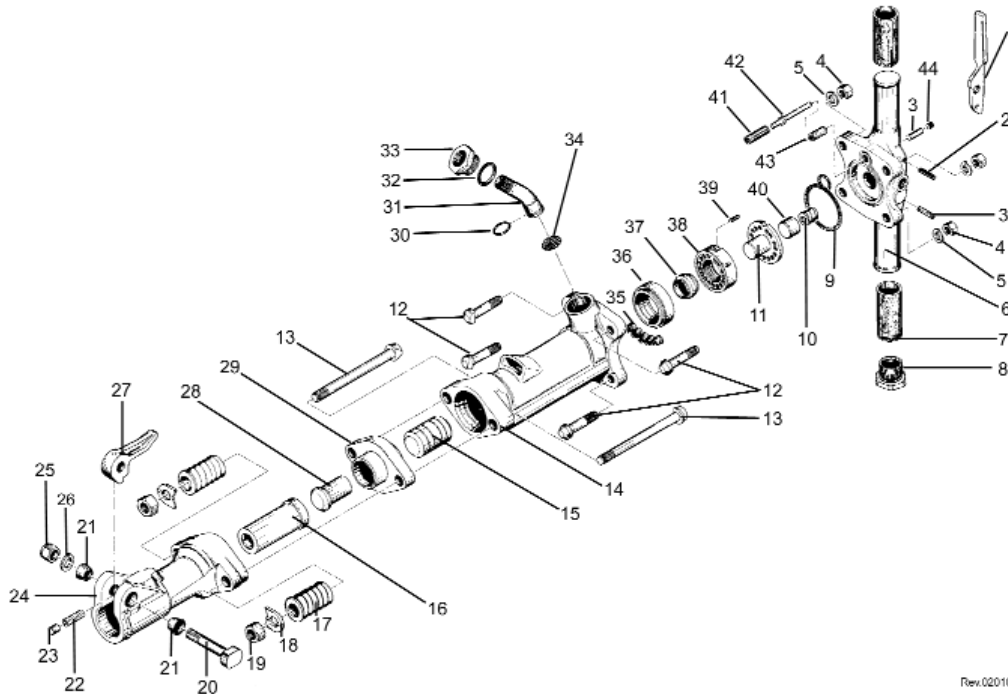
Blows Per Minute	1400
Stroke	4.0937"
Bore	2-1/4"
Length	25.625"
Weight	67 lbs
Air Inlet Thread	3/4"
Avg. Air Consumption (90 PSI)	59 cfm
Recommended Oil Weight	SAE 15 W 50

PAVEMENT BREAKERS

60 LB CLASS

Parts List

WHEN ORDERING REPLACEMENT PARTS, FURNISH THE MODEL & SERIAL NUMBER OF YOUR TOOL



Rev. 02/10/08

INDEX	PART NO.	DESCRIPTION
1	10-PBIF-002	THROTTLE LEVER
2	10-PBIF-003	THROTTLE LEVER PIN (2)
3	10-PBIE-002	OIL CONTROL FELT
4	10-PB1H-001	BACKHEAD BOLT NUT (4)
5	10-PB1H-002	BACKHEAD BOLT LOCK WASHER (4)
6	10-PBIC-001	BACKHEAD BARE (INCL. 10-PBIF-005)
*	10-PBIC-002	BACKHEAD ASSEMBLY COMPLETE
7	10-PBIF-001	RUBBER GRIP (2)
8	10-PBIC-004	OIL RESERVOIR PLUG
9	10-PBIC-005	BACKHEAD O-RING
10	10-PB1H-003	BACKHEAD PLUNGER SPRING
*	10-PB1H-004	BACKHEAD VALVE PORT O-RING
11	10-PBIC-006	VALVE GUIDE
12	10-PBIC-007	BACKHEAD BOLT (4)
13	10-PBIC-008	FRONTHEAD BOLT (2)
14	10-PBIC-009	CYLINDER
15	10-PBIC-010	PISTON
16	10-PBIO-001	FRONTHEAD BUSHING 1-1/8" HEX
*	10-PBIP-001	FRONTHEAD BUSHING 1-1/4" HEX
17	10-PB1H-005	FRONTHEAD BOLT SPRING (2)
*	10-PB1H-006	SPIKE DRIVER DOLLY
18	10-PB1H-007	FRONTHEAD BOLT LOCK WASHER (2)
19	10-PB1H-008	FRONTHEAD BOLT NUT (2)
20	10-PB1H-009	STEEL RETAINER BOLT
21	10-PB1H-010	RETAINER BOLT BUSHING - RUBBER (2)
*	10-PB1H-011	RETAINER BOLT BUSHING - STEEL (2)
22	10-PB1H-012	RETAINER PLUNGER SPRING
23	10-PB1H-013	STEEL RETAINER PLUNGER

INDEX	PART NO.	DESCRIPTION
24	10-PBIC-011	FRONTHEAD BARE
*	10-PBIC-012	FRONTHEAD SPIKE DRIVER
25	10-PB1H-014	STEEL RETAINER BOLT NUT
26	10-PB1H-015	STEEL RETAINER LOCK WASHER
27	10-PB1H-016	STEEL RETAINER - FORGED
28	10-PBIC-013	TAPPET
29	10-PBIC-014	TAPPET SEAT
30	10-PB1H-017	AIR INLET SWIVEL O-RING
31	10-PB1H-018	AIR INLET SWIVEL
32	10-PB1H-019	SWIVEL NUT O-RING
33	10-PB1H-020	AIR INLET SWIVEL NUT
34	10-PB1H-021	AIR INLET SCREEN
35	10-PB1H-022	CYLINDER PLUGS (5)
36	10-PBIC-015	VALVE SEAT
37	10-PB1H-023	AUTOMATIC VALVE
38	10-PBIC-016	VALVE CHEST
39	10-PB1H-024	VALVE DOWEL PIN
40	10-PB1H-025	BACKHEAD PLUNGER
41	10-PB1H-026	THROTTLE VALVE SPRING
42	10-PBIF-004	THROTTLE VALVE
*	10-PB1H-027	THROTTLE O-RING
43	10-PBIF-005	THROTTLE VALVE SLEEVE
44	10-PBIE-001	OIL CONTROL PLUG
*	10-PB1M-001	FRONTHEAD WITH 1-1/8" HEX BUSHING
*	10-PB1N-001	FRONTHEAD WITH 1-1/4" HEX BUSHING
*	10-PB1M-002	FRONTHEAD ASSEMBLY WITH 1-1/8" HEX
*	10-PB1N-002	FRONTHEAD ASSEMBLY WITH 1-1/4" HEX
*	10-PBIC-017	MUFFLER ASSEMBLY

*NOT SHOWN IN PARTS DIAGRAM

PAVEMENT BREAKERS

90 LB CLASS



THOR STYLE

1-1/8" x 6"

Model AT-PB90-118

Blows Per Minute	1250
Stroke	6.0625"
Bore	2-5/8"
Length	28.75"
Weight	92.5 lbs
Air Inlet Thread	3/4"
Avg. Air Consumption (90 PSI)	75 cfm
Recommended Oil Weight	SAE 15 W 50

1-1/4" x 6"

Model AT-PB90-114

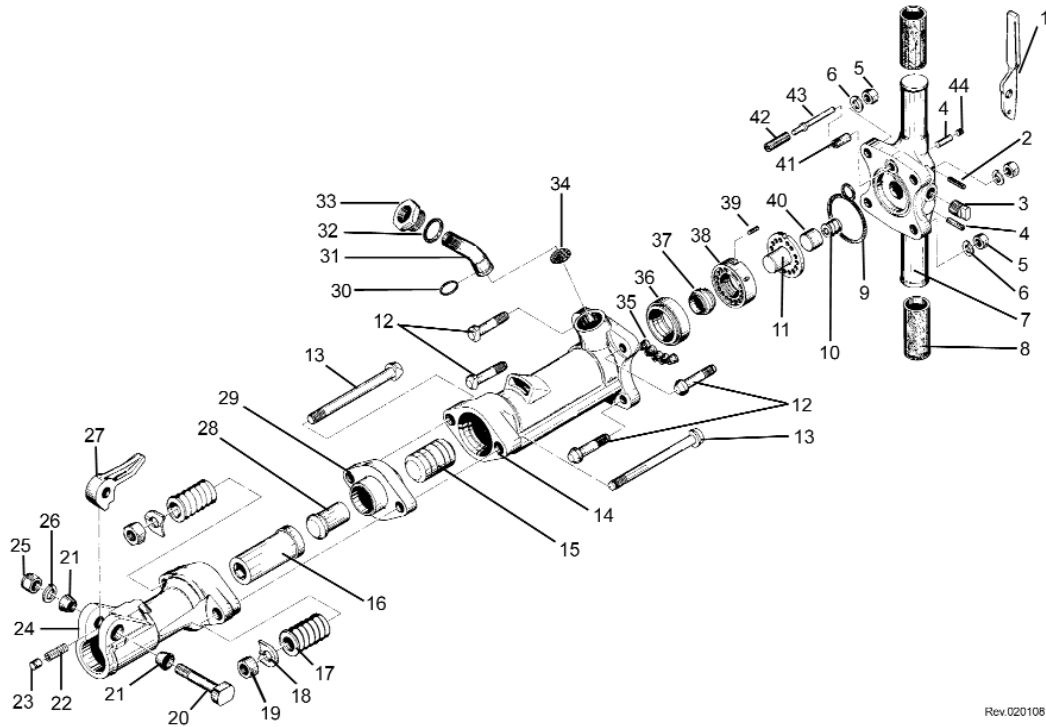
Blows Per Minute	1250
Stroke	6.0625"
Bore	2-5/8"
Length	28.75"
Weight	92.5 lbs
Air Inlet Thread	3/4"
Avg. Air Consumption (90 PSI)	75 cfm
Recommended Oil Weight	SAE 15 W 50

PAVEMENT BREAKERS

90 LB CLASS

Parts List

WHEN ORDERING REPLACEMENT PARTS, FURNISH THE MODEL & SERIAL NUMBER OF YOUR TOOL



Rev 020108

INDEX	PART NO.	DESCRIPTION
1	10-PBIF-002	THROTTLE LEVER
2	10-PBIF-003	THROTTLE LEVER PIN (2)
3	10-PBID-001	OIL RESERVOIR PLUG
4	10-PBIE-002	OIL CONTROL FELT
5	10-PBIH-001	BACKHEAD BOLT NUT (4)
6	10-PBIH-002	BACKHEAD BOLT LOCK WASHER (4)
7	10-PBID-002	BACKHEAD BARE (INCL 10-PBIF-005)
*	10-PBID-003	BACKHEAD ASSEMBLY COMPLETE
8	10-PBIF-001	RUBBER GRIP (2)
9	10-PBID-004	BACKHEAD O-RING
*	10-PBIH-004	BACKHEAD VALVE PORT O-RING
10	10-PBIH-003	BACKHEAD PLUNGER SPRING
11	10-PBID-005	VALVE GUIDE
12	10-PBID-006	BACKHEAD BOLT (4)
13	10-PBID-007	FRONTHEAD BOLT(2)
14	10-PBID-008	CYLINDER
15	10-PBID-009	PISTON
16	10-PBIP-001	FRONTHEAD BUSHING 1-1/8" HEX
*	10-PBIO-001	FRONTHEAD BUSHING 1-1/4" HEX
17	10-PBIH-005	FRONTHEAD BOLT SPRING (2)
*	10-PBIH-006	SPIKE DRIVER DOLLY
18	10-PBIH-007	FRONTHEAD BOLT LOCK WASHER (2)
19	10-PBIH-008	FRONTHEAD BOLT NUT (2)
20	10-PBIH-009	STEEL RETAINER BOLT
21	10-PBIH-010	RETAINER BOLT BUSHING - RUBBER (2)
*	10-PBIH-011	RETAINER BOLT BUSHING - STEEL (2)
22	10-PBIH-012	RETAINER PLUNGER SPRING
23	10-PBIH-013	STEEL RETAINER PLUNGER

INDEX	PART NO.	DESCRIPTION
24	10-PBID-010	FRONTHEAD BARE
*	10-PBID-011	FRONTHEAD SPIKE DRIVER
25	10-PBIH-014	STEEL RETAINER BOLT NUT
26	10-PBIH-015	STEEL RETAINER LOCK WASHER
27	10-PBIH-016	STEEL RETAINER - FORGED
28	10-PBID-012	TAPPET
29	10-PBID-013	TAPPET SEAT
30	10-PBIH-017	AIR INLET SWIVEL O-RING
31	10-PBIH-018	AIR INLET SWIVEL
32	10-PBIH-019	SWIVEL NUT O-RING
33	10-PBIH-020	AIR INLET SWIVEL NUT
34	10-PBIH-021	AIR INLET SCREEN
35	10-PBIH-022	CYLINDER PLUGS (5)
36	10-PBID-014	VALVE SEAT
37	10-PBIH-023	AUTOMATIC VALVE
38	10-PBID-015	VALVE CHEST
39	10-PBIH-024	VALVE DOWEL PIN
40	10-PBIH-025	BACKHEAD PLUNGER
41	10-PBIF-005	THROTTLE VALVE SLEEVE
42	10-PBIH-026	THROTTLE VALVE SPRING
43	10-PBIF-004	THROTTLE VALVE
*	10-PBIH-027	THROTTLE O-RING
44	10-PBIE-001	OIL CONTROL PLUG
*	10-PBIR-001	FRONTHEAD WITH 1-1/4" HEX BUSHING
*	10-PBIO-001	FRONTHEAD WITH 1-1/8" HEX BUSHING
*	10-PBIR-002	FRONTHEAD ASSEMBLY WITH 1-1/4" HEX
*	10-PBIO-002	FRONTHEAD ASSEMBLY WITH 1-1/8" HEX
*	10-PBID-016	OIL TANK PLUG

*NOT SHOWN IN PARTS DIAGRAM

ROCK DRILLS

30 LB CLASS



7/8" x 3-1/4"

Model AT-RD30-78314

Blows Per Minute	2700
Stroke	1.4375"
Bore	2-7/16"
Length	19.5"
Weight	29 lbs
Air Inlet Thread	3/4"
Avg. Air Consumption (90 PSI)	73 cfm
Recommended Oil Weight	SAE 20 W 70

7/8" x 4-1/4"

Model AT-RD30-78414

Blows Per Minute	2700
Stroke	1.4375"
Bore	2-7/16"
Length	19.5"
Weight	29 lbs
Air Inlet Thread	3/4"
Avg. Air Consumption (90 PSI)	73 cfm
Recommended Oil Weight	SAE 20 W 70

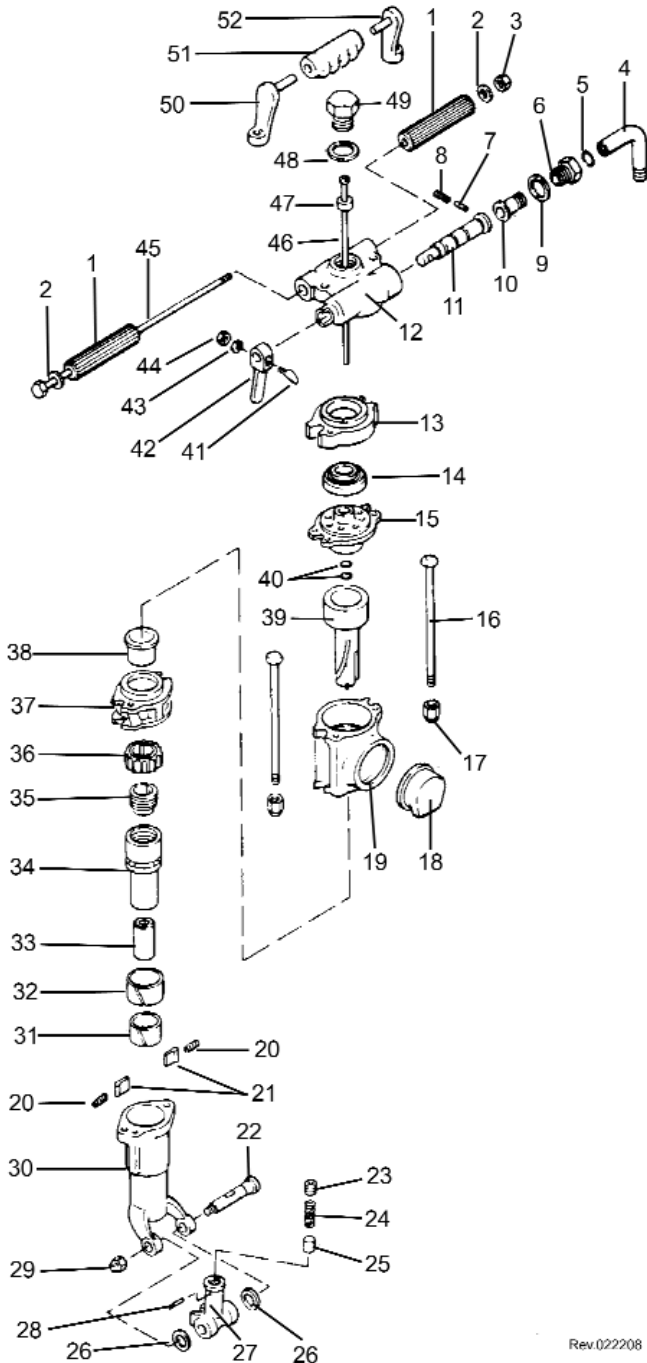
Rock Drills are water compatible with a conversion kit available from Champion Chisel Works. Please call for more details.

ROCK DRILLS

30 LB CLASS

Parts List

WHEN ORDERING REPLACEMENT PARTS, FURNISH THE MODEL & SERIAL NUMBER OF YOUR TOOL



INDEX	PART NO.	DESCRIPTION
1	10-RDIA-001	HANDLE GRIP (2)
2	10-RDIA-002	HANDLE BOLT WASHER (2)
3	10-RDIA-003	HANDLE BOLT NUT
4	10-RDIA-004	AIR CONNECTION ELBOW
5	10-RDIA-005	AIR CONNECTION O-RING
6	10-RDIA-006	AIR CONNECTION NUT WASHER
7	10-RDIA-007	THROTTLE VALVE PLUNGER
8	10-RDIA-008	THROTTLE VALVE SPRING
9	10-RDIA-009	AIR CONNECTION NUT WASHER
10	10-RDIA-010	SWIVEL CONNECTION
11	10-RDIA-011	THROTTLE VALVE
12	10-RDIA-012	BACKHEAD-DRY
13	10-RDIA-013	VALVE CHEST
14	10-RDIA-014	AUTOMATIC VALVE
15	10-RDIA-015	VALVE CHEST COVER
16	10-RDIA-016	SIDE ROD (2)
17	10-RDIA-017	SIDE ROD NUT
18	10-RDIA-018	EXHAUST DEFLECTOR
19	10-RDIA-019	CYLINDER
20	10-RDIA-020	PAWL SPRING (2)
21	10-RDIA-021	ROTATION PAWL (2)
22	10-RDIA-022	STEEL RETAINER BOLT
23	10-RDIA-023	STEEL RETAINER SCREW
24	10-RDIA-024	STEEL RETAINER SPRING
25	10-RDIA-025	STEEL RETAINER PLUNGER
26	10-RDIA-026	STEEL RETAINER PACKING (2)
27	10-RDIA-027	STEEL RETAINER
28	10-RDIA-028	STEEL RETAINER PIN
29	10-RDIA-029	STEEL RETAINER NUT
30	10-RDIA-030	FRONTHEAD 3-1/4" SHANK
*	10-RDIA-031	FRONTHEAD 4-1/4" SHANK
31	10-RDIA-032	FRONTHEAD LINER SMALL
32	10-RDIA-033	FRONTHEAD LINER LARGE
33	10-RDIA-034	SLEEVE BUSHING 7/8" HEX X 3-1/4"
*	10-RDIA-035	SLEEVE BUSHING 7/8" HEX X 4-1/4"
34	10-RDIA-036	ROTATION SLEEVE 3-1/4"
*	10-RDIA-037	ROTATION SLEEVE 4-1/4"
35	10-RDIA-038	SLEEVE NUT
36	10-RDIA-039	RATCHET RING RIFLE NUT
37	10-RDIA-040	FRONT WASHER
38	10-RDIA-041	FRONT WASHER BUSHING
39	10-RDIA-042	PISTON
40	10-RDIA-043	VALVE CHEST COVER O-RING (2)
41	10-RDIA-044	THROTTLE VALVE BOLT
42	10-RDIA-045	THROTTLE VALVE HANDLE
43	10-RDIA-046	THROTTLE BOLT LOCK WASHER
44	10-RDIA-047	THROTTLE BOLT NUT
45	10-RDIA-048	HANDLE BOLT
46	10-RDIA-049	BLOW TUBE
47	10-RDIA-050	TUBE GASKET
48	10-RDIA-051	TUBE GLAND GASKET
49	10-RDIA-052	BLOW TUBE GLAND
50	10-RDIA-053	RIGHT GRIP SUPPORT
51	10-RDIA-054	CENTER GRIP
52	10-RDIA-055	LEFT GRIP SUPPORT

Rev.022208

*NOT SHOWN IN PARTS DIAGRAM

ROCK DRILLS

60 LB CLASS



GARDNER-DENVER STYLE

7/8" x 4-1/4"

Model AT-RD60-78414

Blows Per Minute	1800
Stroke	2.5625"
Bore	2-5/8"
Length	24"
Weight	59 lbs
Air Inlet Thread	3/4"
Avg. Air Consumption (90 PSI)	98 cfm
Recommended Oil Weight	SAE 20 W 70

1" x 4-1/4"

Model AT-RD60-1414

Blows Per Minute	1800
Stroke	2.5625"
Bore	2-5/8"
Length	24"
Weight	59 lbs
Air Inlet Thread	3/4"
Avg. Air Consumption (90 PSI)	98 cfm
Recommended Oil Weight	SAE 20 W 70

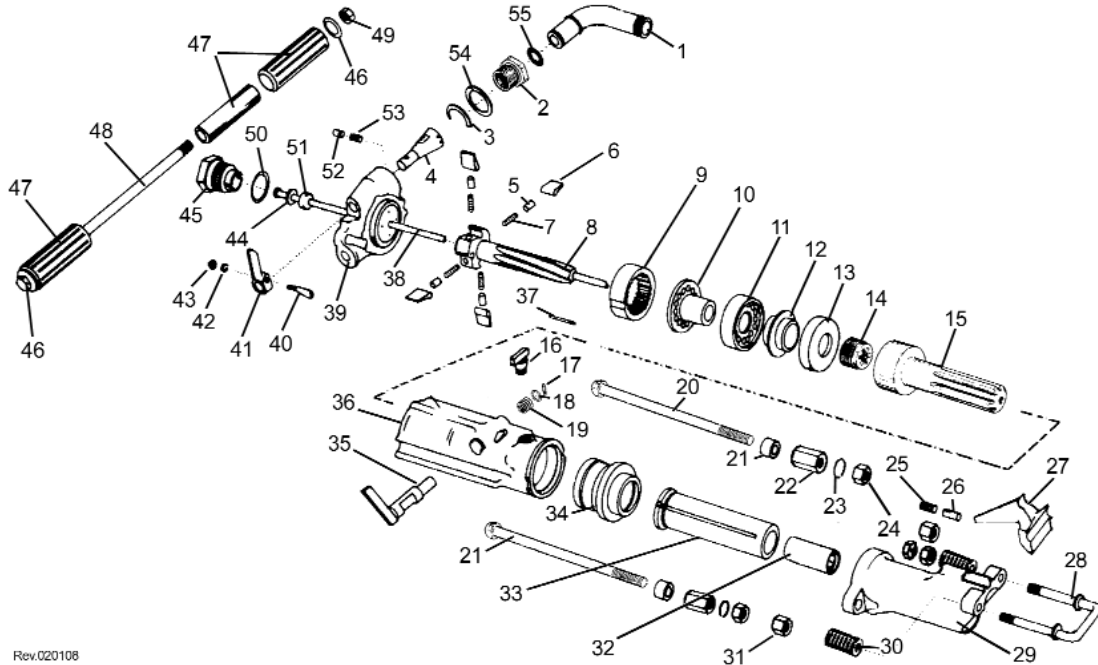
Rock Drills are water compatible with a conversion kit available from Champion Chisel Works. Please call for more details.

ROCK DRILLS

60 LB CLASS

Parts List

WHEN ORDERING REPLACEMENT PARTS, FURNISH THE MODEL & SERIAL NUMBER OF YOUR TOOL



Rev.020108

INDEX	PART NO.	DESCRIPTION
1	10-RDIB-001	AIR INLET SWIVEL
2	10-RDIB-002	SWIVEL NUT
3	10-RDIB-003	SWIVEL RETAINER
4	10-RDIB-004	THROTTLE VALVE
5	10-RDIB-005	PAWL PLUNGER (4)
6	10-RDIB-006	PAWL NON-REVERSIBLE (4)
7	10-RDIB-007	PAWL SPRING COIL (4)
8	10-RDIB-008	RIFLE BAR
9	10-RDIB-009	RATCHET RING
10	10-RDIB-010	VALVE GUIDE
11	10-RDIB-011	REAR VALVE CHEST
12	10-RDIB-012	AUTOMATIC VALVE
13	10-RDIB-013	FRONT VALVE CHEST
14	10-RDIB-014	RIFLE NUT
15	10-RDIB-015	PISTON
16	10-RDIB-016	OIL FILLER PLUG
17	10-RDIB-017	EXHAUST VALVE PIN
18	10-RDIB-018	EXHAUST VALVE WASHER
19	10-RDIB-019	EXHAUST VALVE SPRING
20	10-RDIB-020	SIDE ROD
21	10-RDIB-021	SIDE ROD SPACER (2)
22	10-RDIB-022	SIDE ROD NUT - LONG (2)
23	10-RDIB-023	SIDE ROD LOCK WASHER (2)
24	10-RDIB-024	SIDE ROD NUT - SHORT (2)
25	10-RDIB-025	RETAINER SPRING
26	10-RDIB-026	RETAINER PIVOT
27	10-RDIB-027	STEEL RETAINER 1" X 4-1/4"
28	10-RDIB-028	RETAINER YOKE
29	10-RDIB-029	FRONTHEAD 1" X 4-1/4"

INDEX	PART NO.	DESCRIPTION
30	10-RDIB-030	YOKE SPRING (2)
31	10-RDIB-031	YOKE NUT - NYLON INSERT (2)
32	10-RDIB-032	CHUCK BUSHING 7/8" X 4-1/4"
*	10-RDIB-033	CHUCK BUSHING 1" X 4-1/4"
33	10-RDIB-034	CHUCK DRIVER 1" X 4-1/4"
34	10-RDIB-035	CYLINDER BUSHING
35	10-RDIB-036	EXHAUST VALVE
36	10-RDIB-037	CYLINDER
37	10-RDIB-038	RATCHET DOWEL PIN
38	10-RDIB-039	BLOW TUBE
*	10-RDIB-040	BACKHEAD WITH BUSHING
39	10-RDIB-041	BACKHEAD BUSHING
40	10-RDIB-042	THROTTLE VALVE HANDLE BOLT
41	10-RDIB-043	THROTTLE VALVE HANDLE
42	10-RDIB-044	THROTTLE VALVE HANDLE WASHER
43	10-RDIB-045	THROTTLE VALVE HANDLE BOLT NUT
44	10-RDIB-046	BLOW TUBE WASHER
45	10-RDIB-047	BLOW TUBE GLAND
46	10-RDIB-048	HANDLE BOLT WASHER (2)
47	10-RDIB-049	HANDLE GRIP COMPLETE (2)
48	10-RDIB-050	HANDLE BOLT
49	10-RDIB-051	HANDLE BOLT NUT
50	10-RDIB-052	BLOW TUBE GASKET
51	10-RDIB-053	BLOW TUBE RUBBER SEAL
52	10-RDIB-054	DETENT PLUNGER
53	10-RDIB-055	DETENT SPRING
54	10-RDIB-056	SWIVEL WASHER
55	10-RDIB-057	SWIVEL O-RING
*	10-RDIB-058	MUFFLER

*NOT SHOWN IN PARTS DIAGRAM

BENCH RAMMERS



2" STROKE

Model AT-BR-2BA

Blows Per Minute	1725
Stroke	2"
Bore	1"
Length	16-1/2"
Weight	7 lbs
Air Inlet Thread	3/8"
Avg. Air Consumption (90 PSI)	13 cfm
Taper	802
Min. Hose Size	1/2"
Recommended Oil Weight	SAE 15 W 50

4" STROKE

Model AT-BR-1BA

Blows Per Minute	1240
Stroke	4"
Bore	1"
Length	21-1/2"
Weight	10 lbs
Air Inlet Thread	3/8"
Avg. Air Consumption (90 PSI)	19 cfm
Taper	802
Min. Hose Size	1/2"
Recommended Oil Weight	SAE 15 W 50

RUBBER RAMMER BUTTS



Tool Model No.	Butt Model No.	Size
AT-BR-2BA	BRB-202-802	2-1/2"
	BRB-203-802	3-1/4"
AT-BR-1BA	BRB-202-802	2-1/2"
	BRB-203-802	3-1/4"



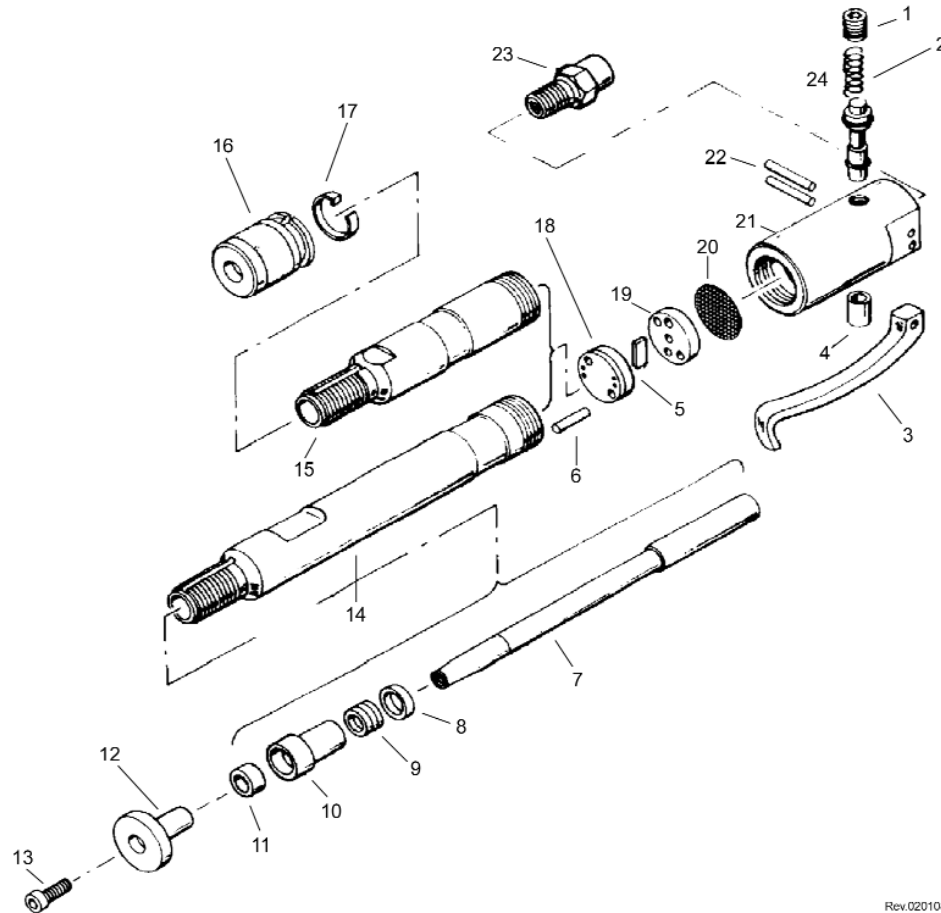
Part Number	Description
2BA-TX00202	Steel Butt w/Bolt Hole
2BA-TX00203	Socket Screw

Bench Rammers are sold with a 2-1/2" rubber butt

BENCH RAMMERS

Parts List

WHEN ORDERING REPLACEMENT PARTS, FURNISH THE MODEL & SERIAL NUMBER OF YOUR TOOL



Rev 020108

INDEX	PART NO.	DESCRIPTION
1	10-RM2E-001	THROTTLE VALVE SPRING PLUG
2	10-RM2E-002	THROTTLE VALVE SPRING
3	10-RM2E-003	LEVER
4	10-RM2E-004	THROTTLE VALVE BUSHING
*	10-RM2E-005	THROTTLE VALVE
5	10-RM2E-006	VALVE
6	10-RM2E-007	VALVE BLOCK DOWEL PIN
7	10-RM2A-001	PISTON - NO THREADS (2BA)
*	10-RM2B-001	PISTON (1BA)
*	10-RM2A-002	PISTON WITH THREADS (2BA)
8	10-RM2E-008	PACKING GLAND WASHER
9	10-RM2E-009	PACKING SET
10	10-RM2A-003	PACKING GLAND BUSHING (2BA)
*	10-RM2B-002	PACKING GLAND BUSHING (1BA)
11	10-RM2E-010	FRONT ROD SEAL

INDEX	PART NO.	DESCRIPTION
12	10-RM2E-011	2-1/2" STEEL BUTT WITH BOLT HOLE
13	10-RM2E-012	SOCKET SCREW (USE W/THREADED PISTON)
14	10-RM2B-003	CYLINDER (1BA)
15	10-RM2A-004	CYLINDER (2BA)
16	10-RM2E-013	PACKING NUT
17	10-RM2E-014	PACKING NUT LOCK CLIP
18	10-RM2E-015	VALVE BLOCK
19	10-RM2E-016	VALVE BLOCK LID
20	10-RM2E-017	SCREEN
21	10-RM2E-018	BACKHEAD BARE
22	10-RM2E-019	THROTTLE LEVER PIN
23	10-RM2E-020	INLET BUSHING
24	10-RM2E-021	THROTTLE VALVE O-RING - UPPER
*	10-RM2E-022	THROTTLE VALVE O-RING - LOWER

*NOT SHOWN IN PARTS DIAGRAM

SAND RAMMER



2" STROKE

Model AT-BR-00

Blows Per Minute	1600
Stroke	2"
Bore	7/10"
Length	12"
Weight	4 lbs
Air Inlet Thread	3/8"
Avg. Air Consumption (90 PSI)	12 cfm
Taper401
Recommended Oil Weight ..	SAE 15 W 50

RUBBER RAMMER BUTTS



#201



#202



#203

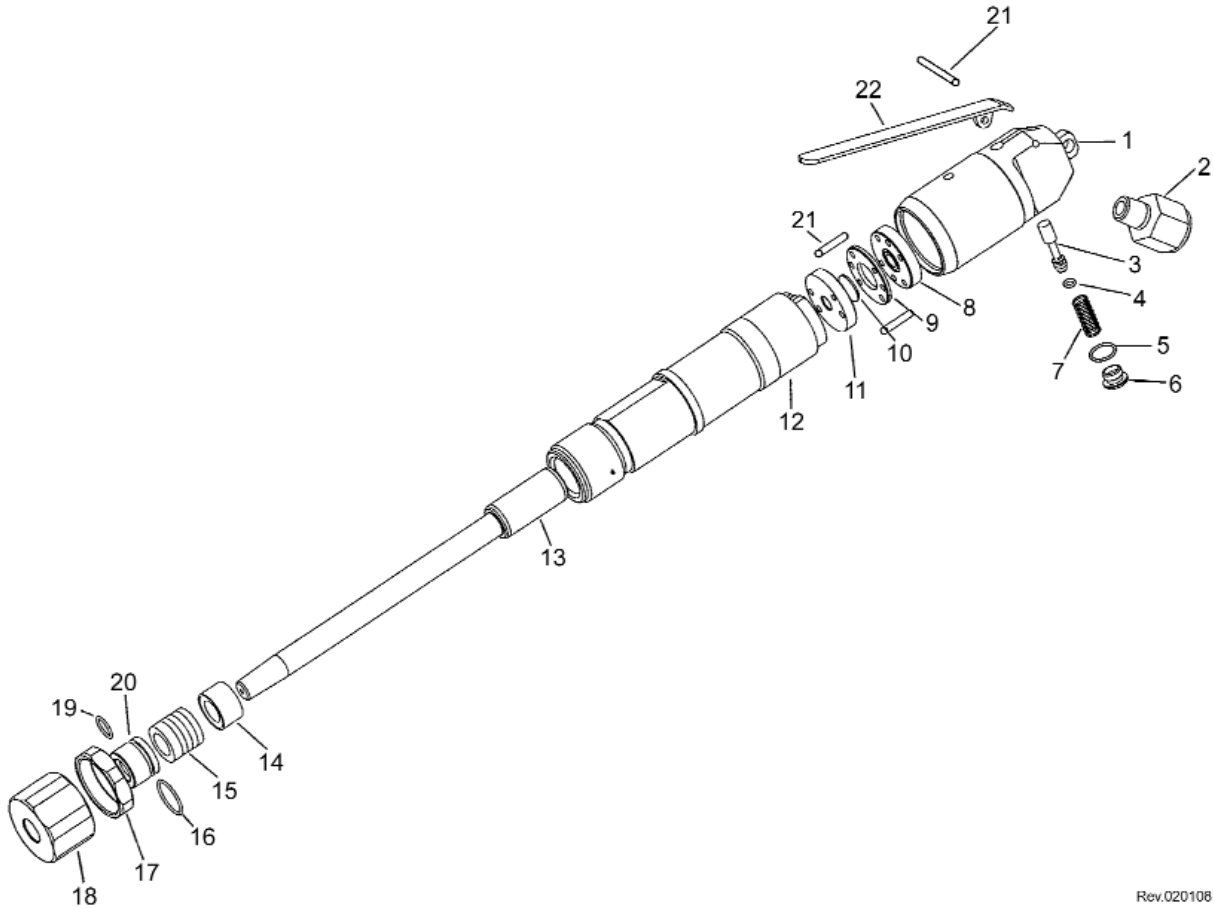
Tool Model No.	Butt Model No.	Size
AT-BR-00	BRB-201S	1-3/4"
	BRB-202S	2-1/2"
	BRB-203S	3-1/4"

Sand Rammers are sold with a 1-3/4" rubber butt

SAND RAMMER

Parts List

WHEN ORDERING REPLACEMENT PARTS, FURNISH THE MODEL & SERIAL NUMBER OF YOUR TOOL



Rev.020108

INDEX	PART NO.	DESCRIPTION
1	10-RM2C-001	BACKHEAD
2	10-RM2C-002	INLET BUSHING
3	10-RM2C-003	THROTTLE VALVE
4	10-RM2C-004	O-RING
5	10-RM2C-005	O-RING
6	10-RM2C-006	THROTTLE PLUG
7	10-RM2C-007	THROTTLE SPRING
8	10-RM2C-008	TOP VALVE
9	10-RM2C-009	VALVE WASHER
10	10-RM2C-010	MAIN VALVE
11	10-RM2C-011	BOTTOM VALVE
12	10-RM2C-012	BARREL

INDEX	PART NO.	DESCRIPTION
13	10-RM2C-013	PISTON
14	10-RM2C-014	GLAND WASHER
15	10-RM2C-015	PACKING (20 PC)
16	10-RM2C-016	O-RING
17	10-RM2C-017	LOCK NUT
18	10-RM2C-018	GLAND CAP
19	10-RM2C-019	O-RING
20	10-RM2C-020	GLAND BUSHING
21	10-RM2C-021	PIN
22	10-RM2C-022	THROTTLE LEVER
*	10-RM2C-023	HANDLE

*NOT SHOWN IN PARTS DIAGRAM

TAMPER

40 LB CLASS



804 TAPER

Model AT-FR-6T

Blows Per Minute	800
Stroke	5.5"
Bore	1.5"
Length	48.25"
Weight	40 lbs
Air Inlet Thread	1/2"
Avg. Air Consumption (90 PSI)	38.5 cfm
Recommended Oil Weight ..	SAE 15 W 50

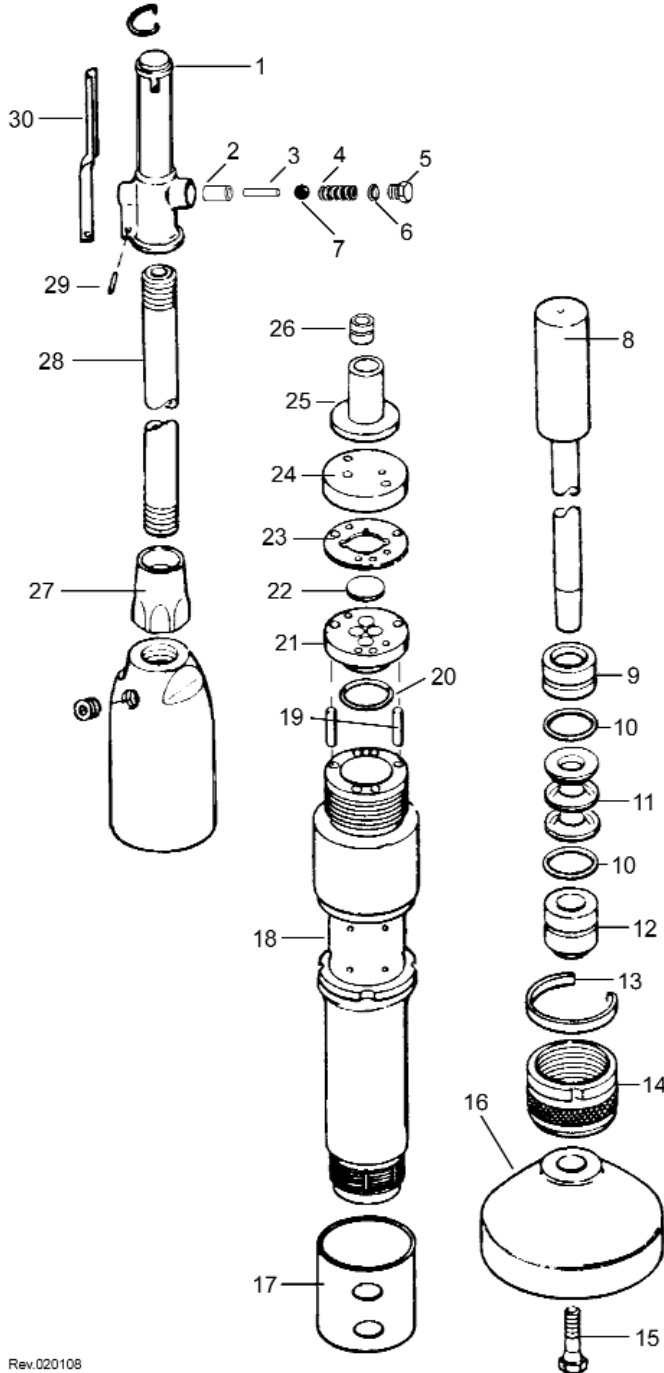
****Tampers are sold with a 6" malleable iron butt****

TAMPER

40 LB CLASS

Parts List

WHEN ORDERING REPLACEMENT PARTS, FURNISH THE MODEL & SERIAL NUMBER OF YOUR TOOL



INDEX	PART NO.	DESCRIPTION
1	10-RMIF-001	THROTTLE BODY BARE
*	10-RMIF-002	THROTTLE BODY COMPLETE
2	10-RMID-001	PUSH PIN BUSHING
3	10-CHIL-001	PUSH PIN
4	10-CHIM-002	THROTTLE BALL SPRING
5	10-RMIF-003	THROTTLE VALVE PLUG
6	10-RMIF-004	THROTTLE VALVE PLUG O-RING
7	10-CHIM-001	THROTTLE BALL
8	10-RMID-002	PLUNGER
9	10-RMID-003	UPPER GUIDE BUSHING
10	10-RMID-004	GUIDE BUSHING O-RING
11	10-RMID-005	PLUNGER PACKING SET
12	10-RMID-006	LOWER GUIDE BUSHING
13	10-RMID-007	PACKING NUT LOCK CLIP
14	10-RMID-008	PACKING NUT
15	10-RMID-009	CLAMP SCREW
16	10-RMID-010	6" MALLEABLE IRON BUTT
*	10-RMID-011	6" ALUMINUM BUTT
17	10-RMID-012	EXHAUST DEFLECTOR - STEEL
*	10-RMID-013	EXHAUST DEFLECTOR - RUBBER
18	10-RMID-014	BARREL
19	10-RMID-015	VALVE DOWEL PIN (2)
20	10-RMID-016	LOWER VALVE BLOCK O-RING
21	10-RMID-017	LOWER VALVE BLOCK
22	10-RMID-018	VALVE DISC
23	10-RMID-019	CENTER PLATE
24	10-RMID-020	UPPER VALVE BLOCK
25	10-RMID-021	OIL RESERVOIR END CAP
26	10-RMID-022	OIL CONTROL BUSHING
*	10-PBIJ-001	OIL PLUG
27	10-RMID-023	CONNECTING PIPE NUT
*	10-RMID-024	BACKHEAD
*	10-RMID-025	BACKHEAD ASSEMBLY
28	10-RMID-026	CONNECTING PIPE
29	10-RMIF-005	THROTTLE LEVER FULCRUM PIN
*	10-RMID-027	THROTTLE LEVER LOCK CLIP
30	10-RMIF-006	THROTTLE LEVER

*NOT SHOWN IN PARTS DIAGRAM

Rev.020108

WELD FLUX SCALERS

200 STYLE



SCALER

Model AT-SG-200

Blows Per Minute	4600
Stroke	1-1/8"
Bore	1"
Length	15"
Weight	4.75 lbs
Air Inlet Thread	1/4"
Minimum Hose Size	.5/16"
Avg. Air Consumption (90 PSI)	12 cfm
Recommended Oil Weight	SAE 10 W 20

NEEDLE SCALER

Model AT-NS-200

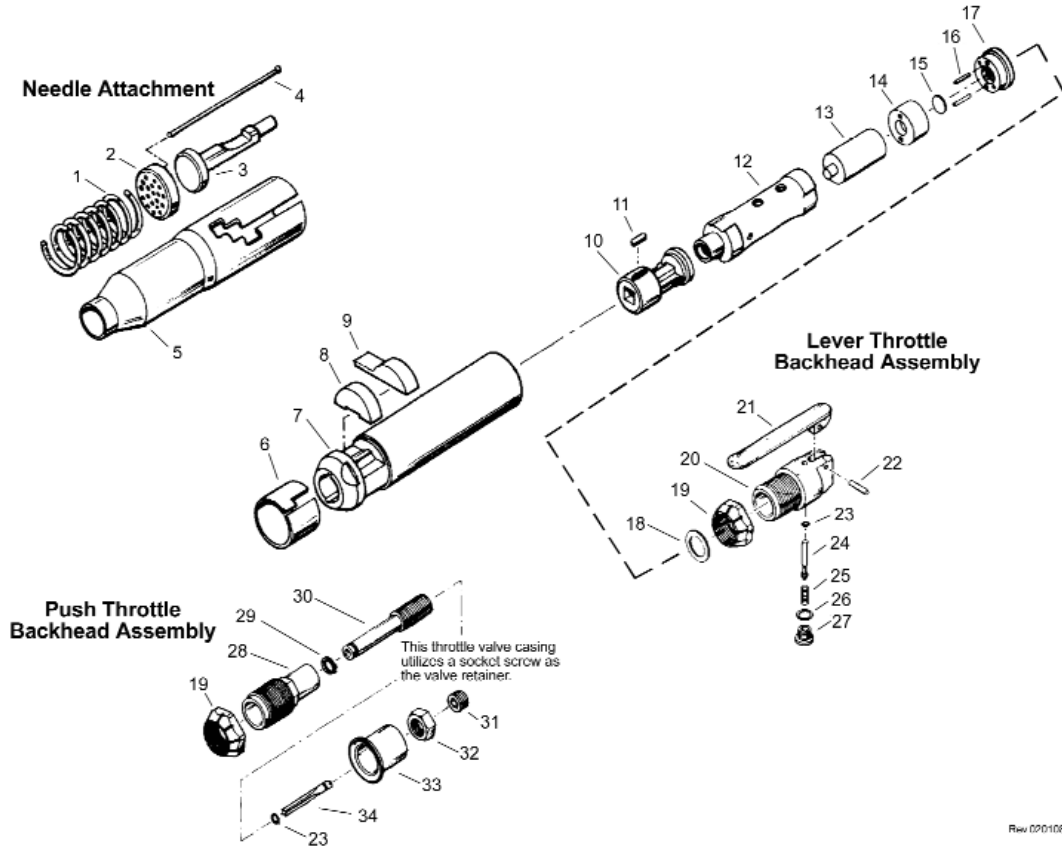
Blows Per Minute	4600
Stroke	1-1/8"
Bore	1"
Length	17"
Weight	6.25 lbs
Air Inlet Thread	1/4"
Minimum Hose Size	.5/16"
Avg. Air Consumption (90 PSI)	12 cfm
Recommended Oil Weight	SAE 10 W 20

Scaler does not come with a chisel - all steel sold separately.

WELD FLUX SCALERS 200 STYLE

Parts List

WHEN ORDERING REPLACEMENT PARTS, FURNISH THE MODEL & SERIAL NUMBER OF YOUR TOOL



INDEX	PART NO.	DESCRIPTION
1	10-SC2A-001	NEEDLE SPRING
2	10-SC2A-002	NEEDLE HOLDER
3	10-SC2A-003	NEEDLE DRIVER
4	10-SC2A-004	7" SCALER NEEDLE
*	10-SC2C-004	5" SCALER NEEDLE
5	10-SC2A-005	NEEDLE TUBE
6	10-SC2A-006	STOPPER SPRING
7	10-SC2A-007	LINER CASE
8	10-SC2A-008	CUSHION SEAT
9	10-SC2A-009	METAL STOPPER
10	10-SC2A-010	SQUARE BUSHING
11	10-SC2A-011	LINER STUD KEY
12	10-SC2A-012	LINER
13	10-SC2A-013	PISTON
14	10-SC2A-014	BOTTOM VALVE SEAT
15	10-SC2A-015	FLUTTER VALVE
16	10-SC2A-016	VALVE PIN
17	10-SC2A-017	TOP VALVE SEAT

INDEX	PART NO.	DESCRIPTION
18	10-SC2A-018	BACKHEAD POSITIONING SPACER
19	10-SC2C-001	BACKHEAD LOCK RING
20	10-SC2A-019	SLOTTED HANDLE
21	10-SC2A-020	THROTTLE LEVER
*	10-SC2A-021	INLET BUSHING
22	10-SC2C-002	LEVER KNOCK PIN
23	10-SC2C-003	THROTTLE VALVE O-RING
24	10-SC2A-022	THROTTLE VALVE WITH O-RING
25	10-SC2A-023	THROTTLE SPRING
26	10-SC2A-024	THROTTLE PLUG GASKET
27	10-SC2A-025	THROTTLE PLUG
28	10-SC2A-026	BARE PUSH TYPE BACKHEAD
29	10-SC2A-027	THROTTLE VALVE SNAP RING
30	10-SC2A-028	THROTTLE VALVE CASING
31	10-SC2A-029	SOCKET SCREW VALVE RETAINER
32	10-SC2A-030	THROTTLE VALVE CASING LOCK NUT
33	10-SC2A-031	CONTROL VALVE HANDLE
34	10-SC2A-032	THROTTLE VALVE - PUSH TYPE

*NOT SHOWN IN PARTS DIAGRAM

WELD FLUX SCALERS

100 STYLE



SCALER

Model AT-SG-100

Blows Per Minute	4000
Stroke	1-1/16"
Bore	15/16"
Length	10.5"
Weight	6.3 lbs
Air Inlet Thread	1/4"
Received Hose Size	1/4"
Avg. Air Consumption (90 PSI)	13 cfm
Recommended Oil Weight	SAE 10 W 20

NEEDLE SCALER

Model AT-NS-100

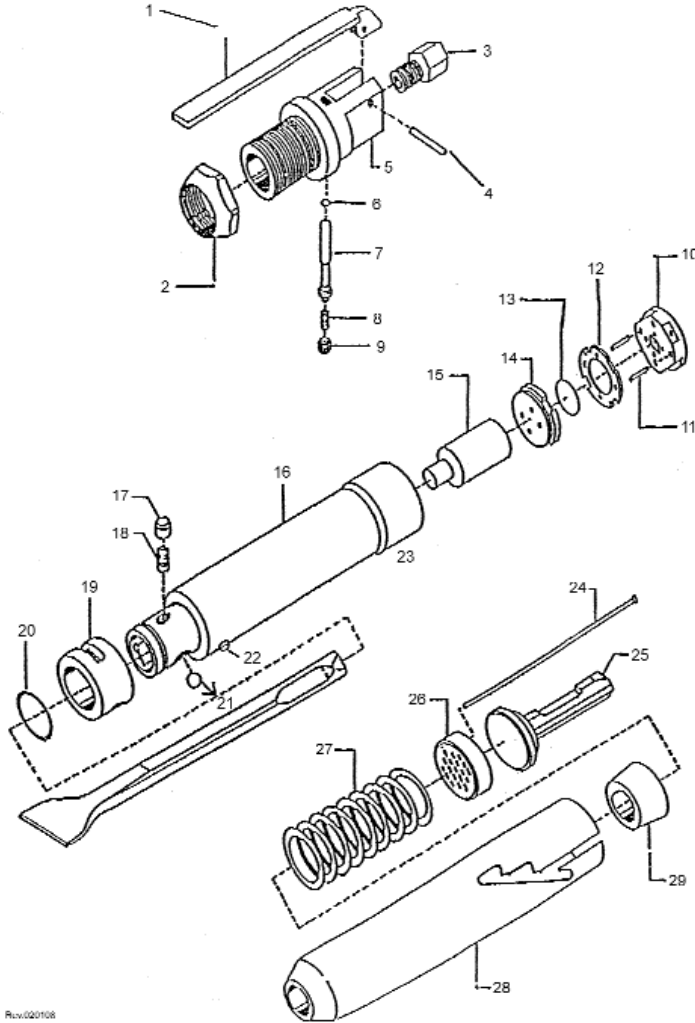
Blows Per Minute	4000
Stroke	1-1/16"
Bore	15/16"
Length	10.5"
Weight	8.35 lbs
Air Inlet Thread	1/4"
Received Hose Size	1/4"
Avg. Air Consumption (90 PSI)	13 cfm
Recommended Oil Weight	SAE 10 W 20

Scaler does not come with a chisel - all steel sold separately.

WELD FLUX SCALERS 100 STYLE

Parts List

WHEN ORDERING REPLACEMENT PARTS, FURNISH THE MODEL & SERIAL NUMBER OF YOUR TOOL



INDEX	PART NO.	DESCRIPTION
1	10-SC2B-001	THROTTLE LEVER
2	10-SC2C-001	BACKHEAD LOCK RING
3	10-SC2B-002	INLET BUSHING
4	10-SC2C-002	LEVER PIN
5	10-SC2B-003	SLOTTED HANDLE
6	10-SC2C-003	THROTTLE VALVE O-RING
7	10-SC2B-004	THROTTLE VALVE
8	10-SC2B-005	THROTTLE VALVE SPRING
9	10-SC2B-006	THROTTLE VALVE CAP
10	10-SC2B-007	VALVE CAP
11	10-SC2B-008	VALVE PIN
12	10-SC2B-009	VALVE SPACER
13	10-SC2B-010	FLUTTER VALVE
14	10-SC2B-011	VALVE SEAT
15	10-SC2B-012	PISTON
16	10-SC2B-013	BARREL ONLY
17	10-SC2B-014	LOCK PLUNGER
*	10-SC2B-015	CASE WITH LINER
18	10-SC2B-016	PLUNGER LOCK SPRING
19	10-SC2B-017	RETAINER SLEEVE
20	10-SC2B-018	LOCK SHIM RING
21	10-SC2B-019	RETAINER STEEL BALL
22	10-SC2B-020	RETAINER PIN
23	10-SC2B-021	LINER ONLY
24	10-SC2C-004	5" STEEL SCALER NEEDLE
25	10-SC2B-022	NEEDLE DRIVER
26	10-SC2B-023	NEEDLE HOLDER
27	10-SC2B-024	NEEDLE SPRING
28	10-SC2B-025	NEEDLE TUBE
29	10-SC2B-026	INSERT FOR HOUSING

*NOT SHOWN IN PARTS DIAGRAM

LONG REACH FLOOR SCRAPER 14 LB CLASS



.590" HEX

Model AT-LR-LW59

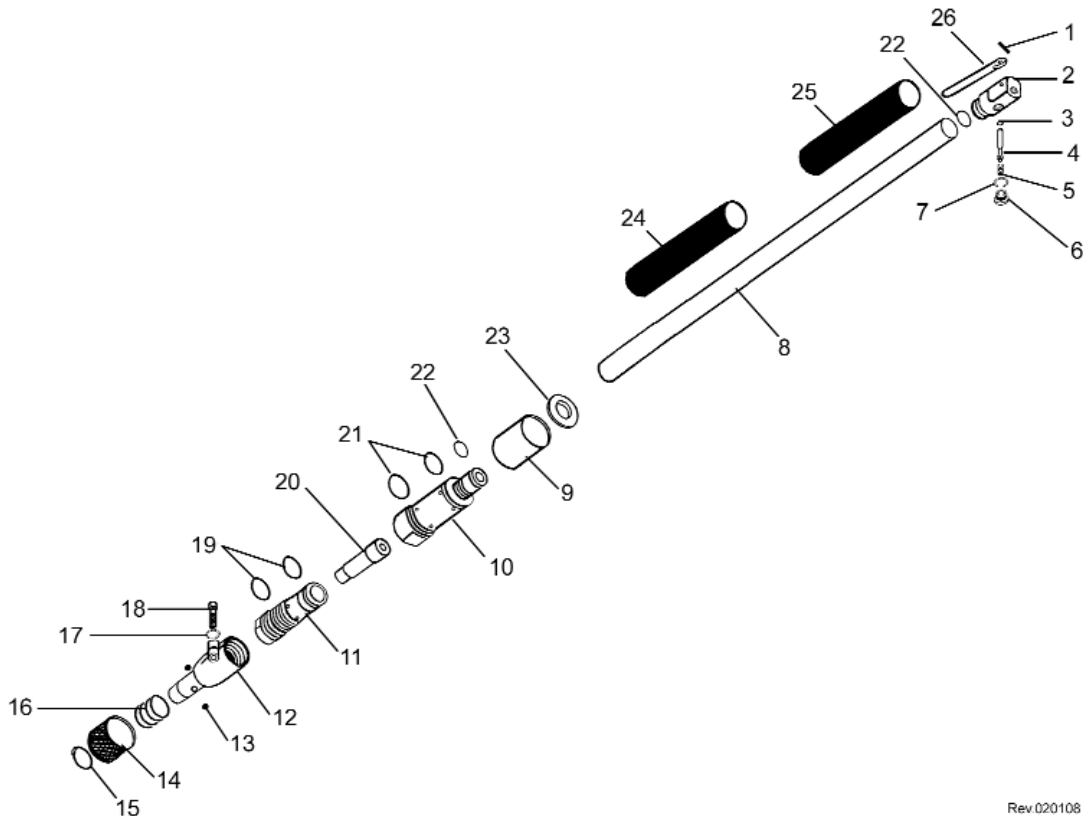
Blows Per Minute	2500
Stroke	1.501"
Bore	1.1875"
Length	24"
Weight	14 lbs
Air Inlet Thread	1/4"
Avg. Air Consumption (90 PSI)	9 cfm
Recommended Oil Weight	SAE 10 W 20

Floor Scraper does not come with a chisel - all steel sold separately.

LONG REACH FLOOR SCRAPER 14 LB CLASS

Parts List

WHEN ORDERING REPLACEMENT PARTS, FURNISH THE MODEL & SERIAL NUMBER OF YOUR TOOL



Rev 020108

INDEX	PART NO.	DESCRIPTION
1	10-LR1A-001	SPLIT PIN
2	10-LR1A-002	THROTTLE BODY
*	10-LR1A-003	THROTTLE BODY COMPLETE
3	10-LR1A-004	THROTTLE VALVE O-RING
4	10-LR1A-005	THROTTLE VALVE
5	10-LR1A-006	THROTTLE PLUG O-RING
6	10-LR1A-007	THROTTLE PLUG
7	10-LR1A-008	THROTTLE VALVE SPRING
8	10-LR1A-009	CONNECTING PIPE
9	10-LR1A-010	EXHAUST SLEEVE
10	10-LR1A-011	CYLINDER
11	10-LR1A-012	CYLINDER SLEEVE
12	10-LR1A-013	FRONTHEAD
13	10-LR1A-014	RETAINING BALL (2)
14	10-LR1A-015	RETAINER

INDEX	PART NO.	DESCRIPTION
15	10-LR1A-016	RETAINER RING
16	10-LR1A-017	RETAINER SPRING
17	10-LR1A-018	FRONTHEAD BOLT WASHER
18	10-LR1A-019	FRONTHEAD BOLT
19	10-LR1A-020	SLEEVE O-RING
19	10-LR1A-021	SLEEVE O-RING
20	10-LR1A-022	PISTON
21	10-LR1A-023	CYLINDER O-RING
21	10-LR1A-024	CYLINDER O-RING
22	10-LR1A-025	CONNECTION O-RING (2)
*	10-LR1A-026	CONNECTION PIPE SHIM
23	10-LR1A-027	EXHAUST SLEEVE CAP
24	10-LR1A-028	RUBBER GRIP
25	10-LR1A-029	RUBBER THROTTLE GRIP
26	10-LR1A-030	THROTTLE LEVER

*NOT SHOWN IN PARTS DIAGRAM

HEAVY DUTY SCRAPER



.580" HEX

Model AT-LR-HD58

Blows Per Minute	3850
Stroke	1.5"
Bore	1.5"
Length	53"
Weight	17 lbs
Air Inlet Thread	1/2"
Avg. Air Consumption (90 PSI)	12 cfm
Recommended Oil Weight	..SAE 10 W 20

.680" ROUND

Model AT-LR-HD68

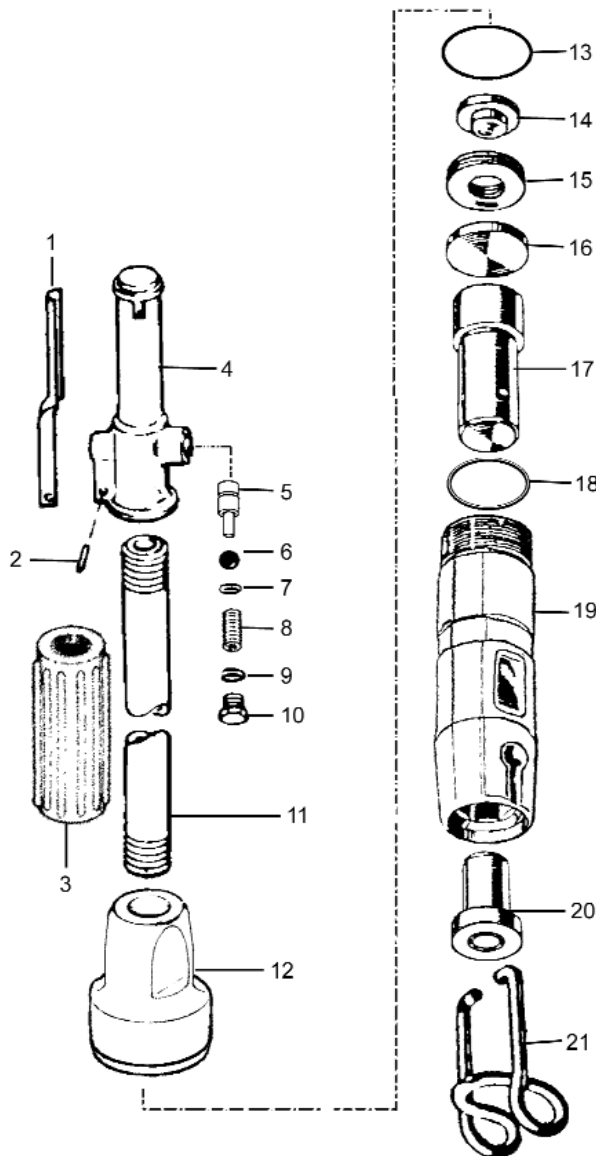
Blows Per Minute	3850
Stroke	1.5"
Bore	1.5"
Length	53"
Weight	17 lbs
Air Inlet Thread	1/2"
Avg. Air Consumption (90 PSI)	12 cfm
Recommended Oil Weight	..SAE 10 W 20

Floor Scraper does not come with a chisel - all steel sold separately.

HEAVY DUTY SCRAPER

Parts List

WHEN ORDERING REPLACEMENT PARTS, FURNISH THE MODEL & SERIAL NUMBER OF YOUR TOOL



Rev.020108

INDEX	PART NO.	DESCRIPTION
1	10-RM1F-006	THROTTLE LEVER
2	10-RM1F-005	THROTTLE LEVER FULCRUM PIN
3	10-LR1B-001	RUBBER GRIP
4	10-RM1F-001	THROTTLE BODY BARE
*	10-RM1F-002	THROTTLE BODY COMPLETE
5	10-LR1B-002	PUSH PIN
6	10-CH1M-001	THROTTLE BALL
7	10-LR1B-003	PUSH PIN O-RING
8	10-CH1M-002	THROTTLE BALL SPRING
9	10-RM1F-004	THROTTLE VALVE PLUG O-RING
10	10-RM1F-003	THROTTLE VALVE PLUG
11	10-LR1B-004	CONNECTING PIPE 3/6"
12	10-LR1B-005	SOLID BACKHEAD
13	10-CH1O-001	CYLINDER O-RING
14	10-LR1B-006	UPPER VALVE PLATE
15	10-LR1B-007	VALVE SPRING (3)
16	10-LR1B-008	BUMPER VALVE PLATE
17	10-LR1B-009	PISTON
18	10-LR1B-010	LOWER VALVE RING
19	10-LR1B-011	CYLINDER (W/REPLACEABLE .580 HEX BUSHING)
20	10-LR1B-012	CHISEL BUSHING .580" HEX
*	10-LR1B-013	CHISEL BUSHING .680" ROUND
21	10-LR1B-014	RETAINER SPRING

*NOT SHOWN IN PARTS DIAGRAM

ACCESSORIES

CHIPPING HAMMER



Solid Retainer



Quick Change Retainer



Lock Spring

Part No.	Description
CHR-1190CP	Solid/Taper/Oval (Chicago Pneumatic Style)
CHR-1190IR	Solid/Taper/Oval (Ingersoll Rand Style)
CHR-1190SUL*	Solid/Taper/Oval (Sullair Style)
CHR-11901655	Solid/Straight/Oval (K2L Style)
CHR-1190APT	Solid/Straight/Oval (APT Style)
CHR-1291CP	Quick Change/Taper (Chicago Pneumatic Style)
CHR-1291IR	Quick Change/Taper (Ingersoll Rand Style)
CHR-1291SUL*	Quick Change/Taper (Sullair Style)
CHR-1291APT	Quick Change/Straight (APT Style)
CHR-SPRING	Lock Spring - Fits all styles

*Fits Champion Chisel Works hammers.

SWIVELS & OILERS



Air Inlet Hose Swivel



Whip Hose Assembly



In Line Oiler

Part No.	Description
HS-782412	7/8"-24 UNC x 1/2" Hose Barb
HS-3812	3/8" NPT x 1/2" Hose Barb
HS-1212	1/2" NPT x 1/2" Hose Barb
WHA-6CH	6' whip hose assembly with HS-782412 swivel, coupling and ILO-S in line oiler.

Part No.	ILO-S	ILO-M	ILO-L
Oil Capacity	1.4 oz	3.7 oz	11 oz
Pipe Size	1/2"	3/4"	3/4"
Max. Working Pressure	500 psi	260 psi	300 psi
Dimensions	4-1/2"x2-1/4"	6" x 2-3/4"	7"x3-1/2"
Weight	.875 lbs	1.5 lbs	2 lbs

RIVET BUSTER



Rubber Bumper



Upper Sleeve



Lower Sleeve



Split Lower Sleeve



Lock Spring



Retainer

Part No.	Description
RBP-RB2104	Rubber Bumper
RBP-UB2102	Urethane Bumper
RBP-US2101	Upper Sleeve
RBP-LS2103	Lower Sleeve
RBP-LS2103S	Split Lower Sleeve
RBP-RS2194	Retainer Spring
10-RBIN-001	3" Piston / 6" & 8" Stroke
10-RBIM-002	4" Piston / 11" Stroke

Part No.	Fits Tool	I.D.
RBR-21902557	CP-4181	2.557"
RBR-21902565	JET RB11	2.565"
RBR-21902400	JET RB90, RB91	2.400"
RBR-21902445	CP-60, 80, 90	2.445"
RBR-1851	APT133/MPI133	2.610"
RBR-9001200	IR9001	Threaded
RBC-9RB-207	Clip for RBR-9001200	

RUBBER RAMMER BUTTS



#201



#202



#203

Tool Model No.	Butt Part No.	Size
AT-BR-00	BRB-201S	1-3/4"
	BRB-202S	2-1/2"
	BRB-203S	3-1/4"
AT-BR-2BA	BRB-202-802	2-1/2"
	BRB-203-802	3-1/4"
AT-BR-1BA	BRB-202-802	2-1/2"
	BRB-203-802	3-1/4"

Part Number	Description
2BA-TX00202	Steel Butt w/Bolt Hole
2BA-TX00203	Socket Crew

STEEL BITS

Champion Chisel Works offers a full range of steel bits for air tools. Consult your Champion Chisel Works steel product catalog or call 815-535-0647 to request more information.

PNEUMATIC CHIPPING HAMMERS

.580" Hex Shank - Round, Oval & Non Collar
 .680" Round Shank - Round, Oval & Non Collar

Moil Point	Narrow
1.5" Wide	2" Wide
2.5" Wide	3" Wide
Bush Tool	Clay Spade
Floor Scraper System	

ELECTRIC CHIPPING HAMMERS

3/4" Hex Demo	Spline Drive Style
SDS Max Style	Kango 21mm Style
SDS Plus Style	Makita 8900N Style
Wacker Style	1-1/8" Hex Notch
Hilti 805/905 Style	Makita HK1810 Style
Moil Point	Narrow
2" Wide	3" Wide
Bush Tool	Clay Spade
Asphalt Cutter	Bent Chisel
Floor Scraper System	

DRILL STEEL & ROCK BITS

H Thread	11 Degree Tapered
D Thread	E Thread
Rope	
7/8" x 3-1/4" Shank	7/8" x 4-1/4" Shank
1" x 4-1/4" Shank	

WHIRLEY BITS

7/8" x 3-1/4" Shank	7/8" x 4-1/4" Shank
1" x 4-1/4" Shank	C-9 Class

PNEUMATIC PAVEMENT BREAKERS

7/8" x 3-1/4" Shank	1" x 4-1/4" Shank
1-1/8" x 6" Shank	1-1/4" x 6" Shank
Moil Point	Narrow
3" Wide	Asphalt Cutter
Bush Tool	Clay Spade

JUMBO RIVET BUSTERS

Moil Point	Narrow
Ripper	

WELD FLUX SCALING HAMMERS

Cleco Style	Ingersoll Rand Style
.371 Style	.432 Style
Moil Point	Blank
Narrow	Wide Chisel
Bent Chisel	

PNEUMATIC ZIP GUNS

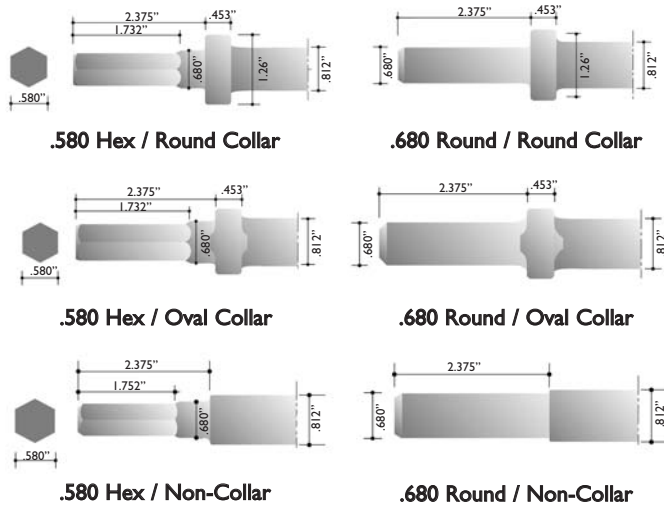
.401 Turn Type	.401 Non-Turn Type
.498 Turn Type	.498 Non-Turn Type
Moil Point	Blank
Narrow	Taper Punch
2" Wide Chisel	Bent Chisel

BOOM MOUNTED DEMO BITS

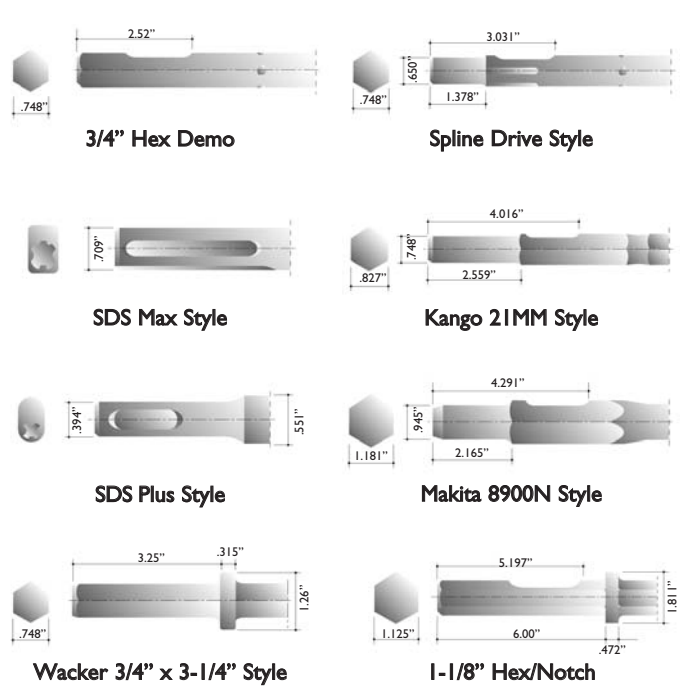
A complete line of bits are available - please call factory with the Manufacturer & Model Number of your hydraulic breaker for pricing & availability.

SHANK REFERENCE

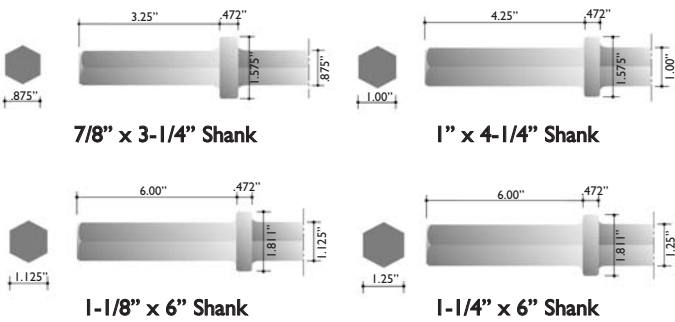
PNEUMATIC CHIPPER STEEL



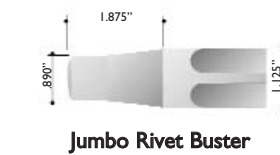
ELECTRIC CHIPPER STEEL



PAVEMENT BREAKER STEEL



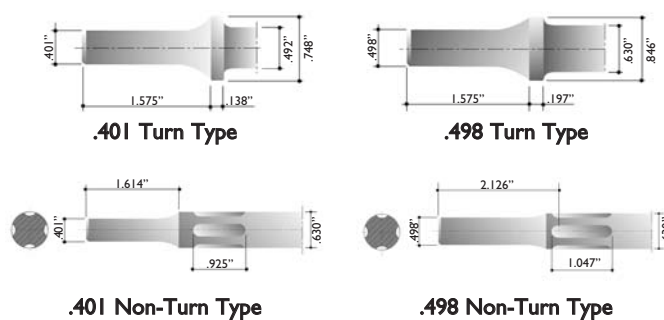
RIVET BUSTER



Additional electric shanks:

- Hilti 805/905 Style
- Makita HK1810 Style
- Edco .580" Hex Style
- Edco 7/8" Hex Style

PNEUMATIC ZIP GUN BITS



WELD FLUX SCALING BITS

